

CREATE  
YOUR STYLE  
with SWAROVSKI ELEMENTS

DESIGN PROJECT

HALLOWEEN

# CANDY JAR

“JACK-O’-LANTERN”



# HALLOWEEN CANDY JAR “JACK-O’-LANTERN”



## SWAROVSKI ELEMENTS

Article	Product Group	Article No.	Amount	Size	Color	Color Code
	Flat Backs No Hotfix	2520	18 pcs.	10x8mm	Crystal	001 F
	Flat Backs No Hotfix	2709	13 pcs.	13x8mm	Crystal	001 F
	Flat Backs No Hotfix	2716	12 pcs.	5mm	Crystal	001 F
	Flat Backs No Hotfix	2720	14 pcs.	7.5mm	Crystal	001 F
	Flat Backs No Hotfix	2720	8 pcs.	9mm	Crystal	001 F
	Flat Backs No Hotfix	2720	3 pcs.	12.5mm	Crystal	001 F
	Flat Backs No Hotfix	2770	37 pcs.	6x3.5mm	Crystal	001 F
	Flat Backs No Hotfix	2770	20 pcs.	16x9.5mm	Crystal	001 F
	Flat Backs No Hotfix	2770	2 pcs.	16x9.5mm	Crystal Copper	001 COP

## Supplies & Tools

### Supplies

Glue used for wood  
Newspaper  
5x Sheet of Tissue paper, black  
3x Sheet of Tissue paper, orange

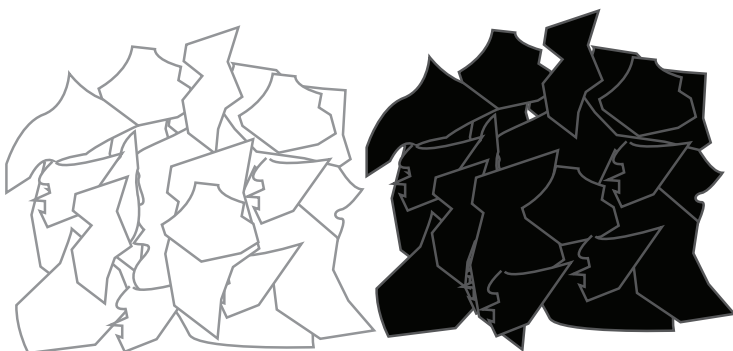
### Tools

Balloon  
Felt pen black  
Felt pen silver  
Needle  
Paint brush  
Scissors  
Sheet of paper A4  
Tape  
Toothpick  
Tweezers

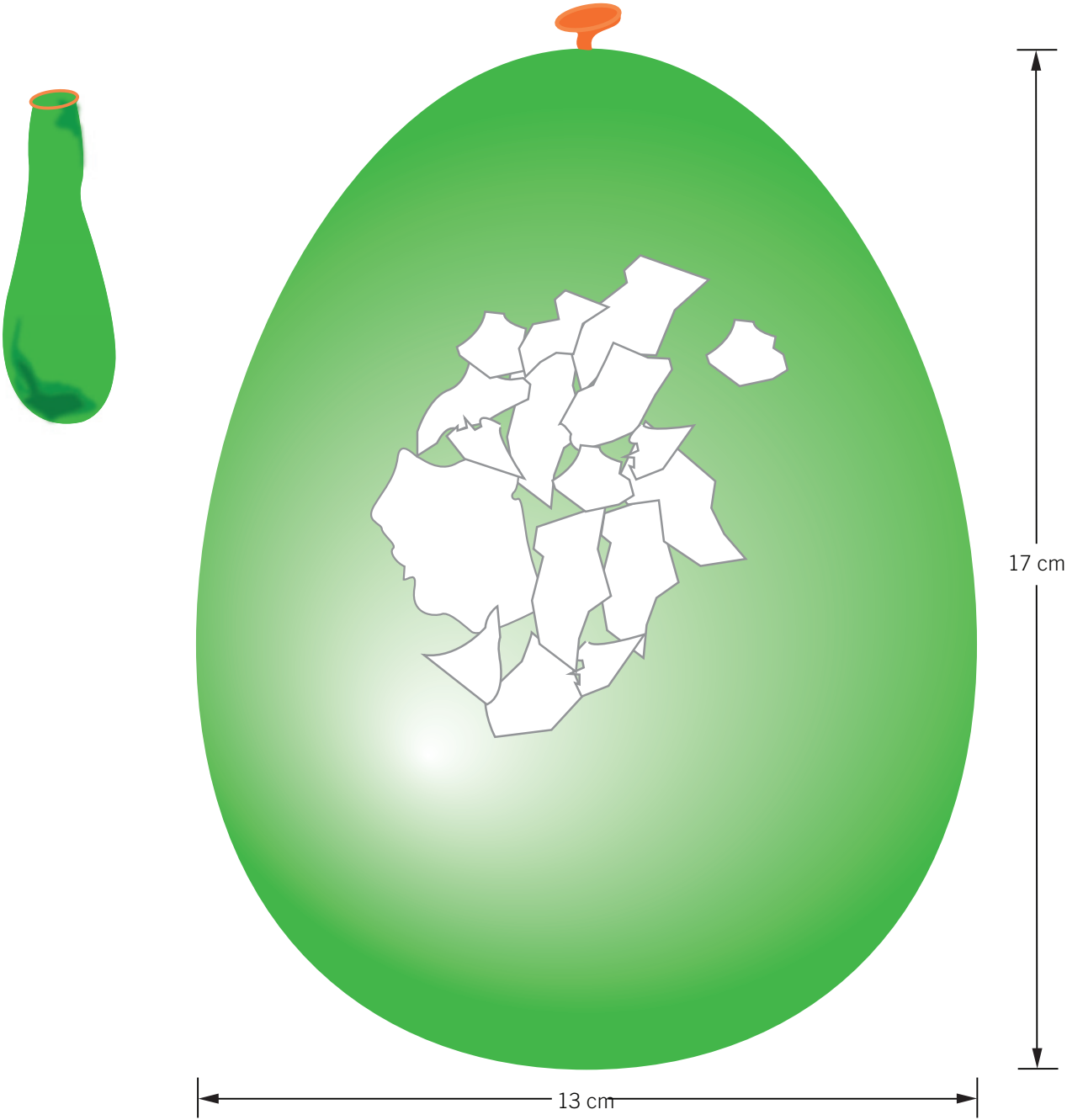
Level of design: BEGINNER

Have also a look at the **text instruction** at the last page!

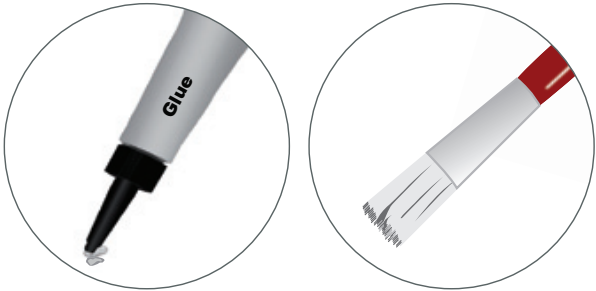
## STEP 1



STEP 2

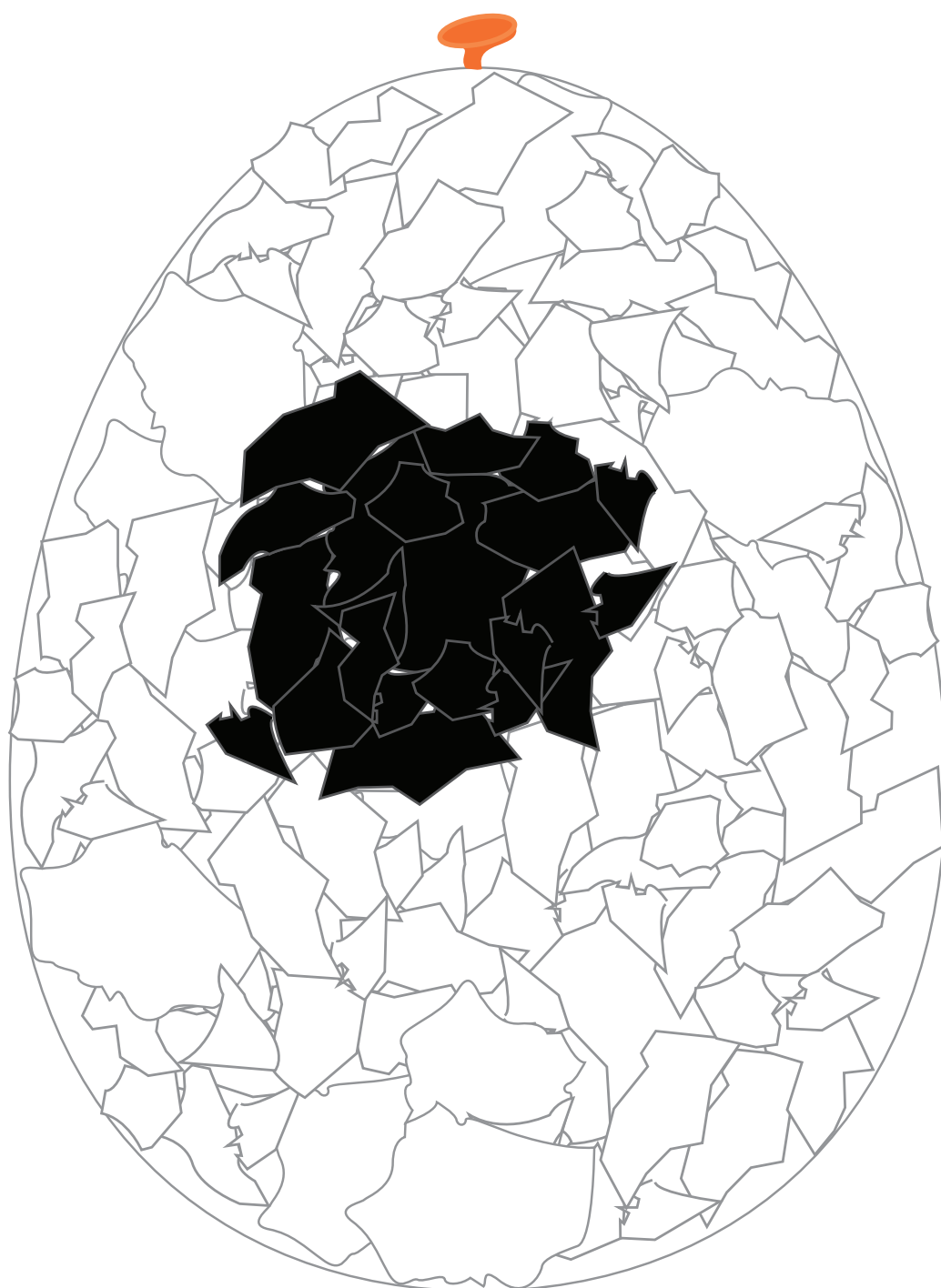


Repeat



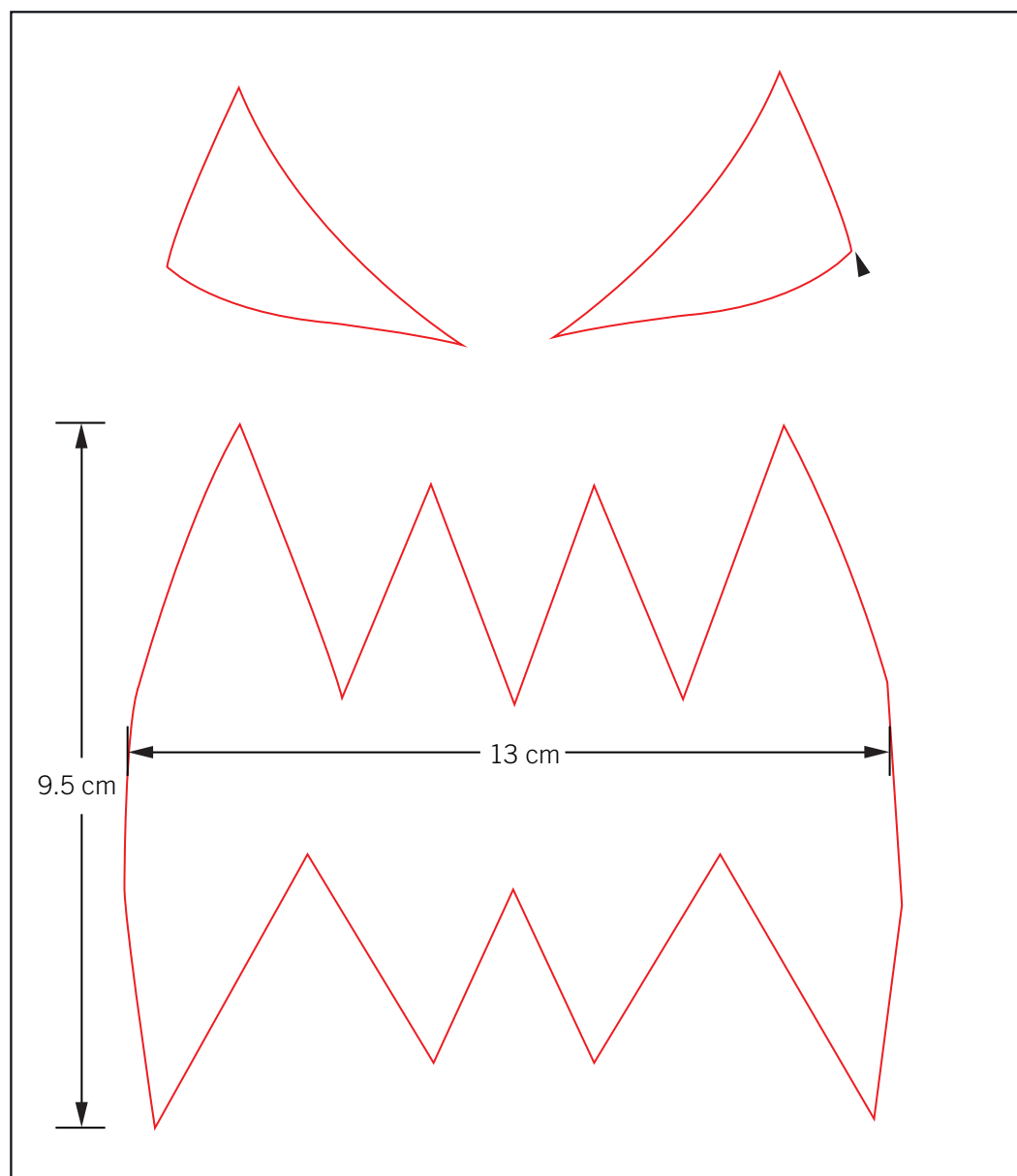
Scale 1:2





Repeat

### STEP 3

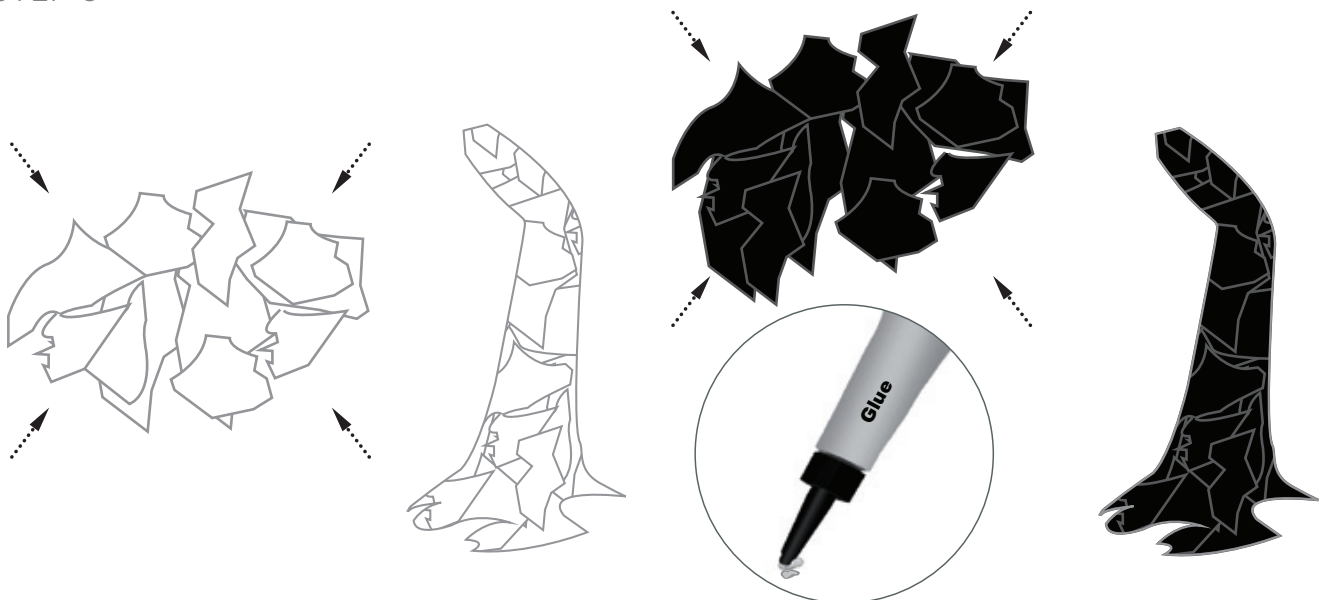


STEP 4





## STEP 5

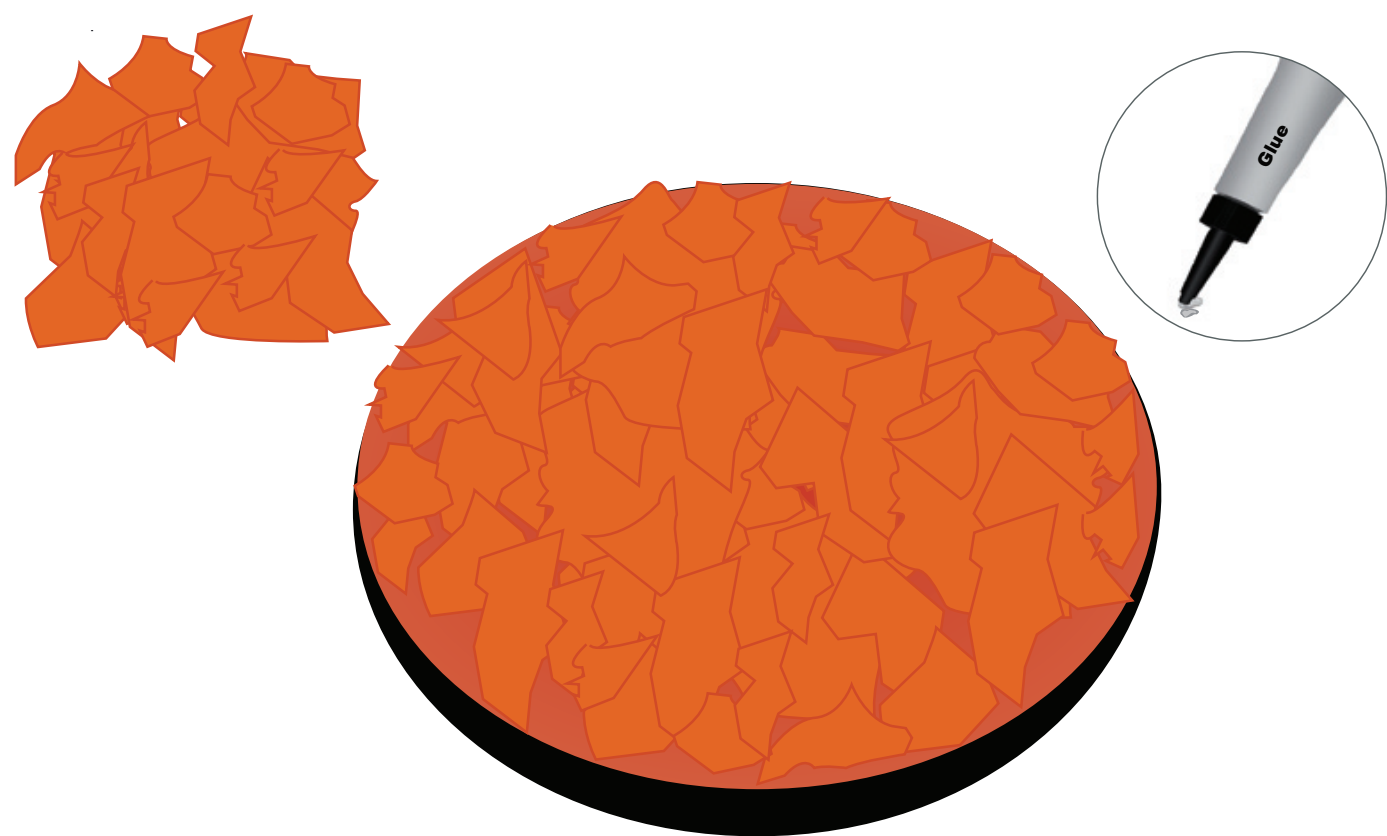




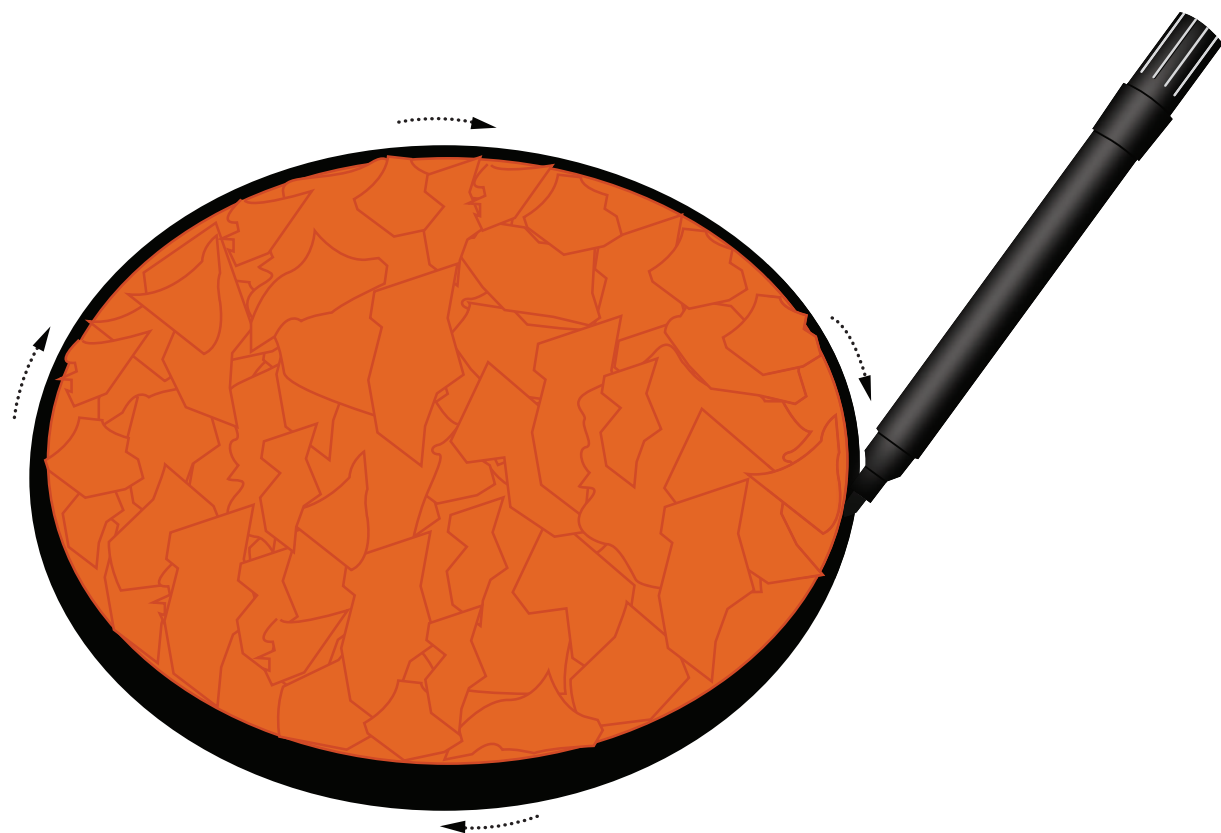




STEP 7



STEP 8





# HALLOWEEN CANDY JAR “JACK-O’-LANTERN”



- STEP 1: Tear the newspaper (i. e. white paper in the illustrations) and the black paper as shown in the illustrations with this step.
- STEP 2: Inflate a balloon until it is approximately 17x13cm in size. Glue the torn white and black papers onto the balloon as shown in the illustration. Let it dry overnight.
- STEP 3: Cut out the pattern shown in this step.
- STEP 4: Place the pattern onto the balloon and make outlines using the silver felt pen. Glue the Flat Backs No Hotfix from the SWAROVSKI ELEMENTS assortment onto it as shown in the illustrations with this step.
- STEP 5: Tear some more newspaper and form a stem. Tear some more black paper and glue it onto the stem. Glue the stem onto the balloon and prick the balloon with a needle. Place tape in between the eyes and the mouth in order to know where exactly to cut the pumpkin (see illustration).
- STEP 6: Cut the pumpkin at the taped line.
- STEP 7: Glue torn pieces of orange paper inside the pumpkin.
- STEP 8: Use a black felt pen to color the edges of the pumpkin as shown in the illustration.