

CREATE  
YOUR STYLE  
with SWAROVSKI ELEMENTS



DESIGN PROJECT  
HALLOWEEN LANTERN  
“MOON”



# HALLOWEEN LANTERN “MOON”



## SWAROVSKI ELEMENTS

Article	Product Group	Article No.	Amount	Size	Color	Color Code
	Pendants	6722	2 pcs.	16 mm	Crystal	001
	Pendants	6722	1 pc.	30 mm	Crystal	001

## Supplies & Tools

### Supplies

Cardboard, black, 37x11 cm  
3x Jump ring, black, 8mm

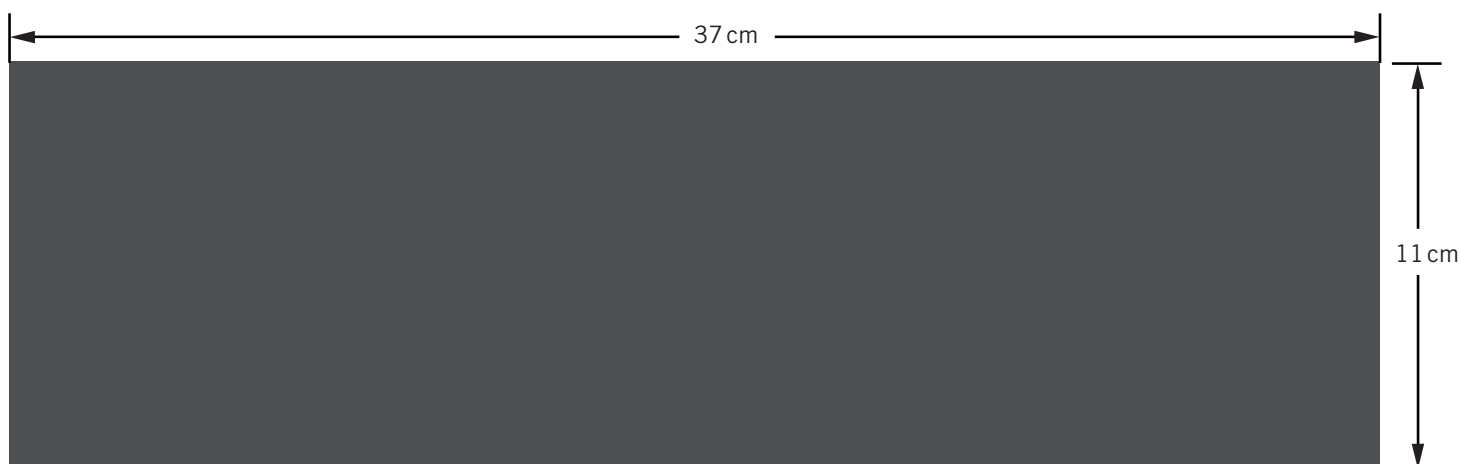
### Tools

Flat nose pliers  
Scissors  
1x Sheet of paper, DIN A4  
Thick needle

Level of design: BEGINNER

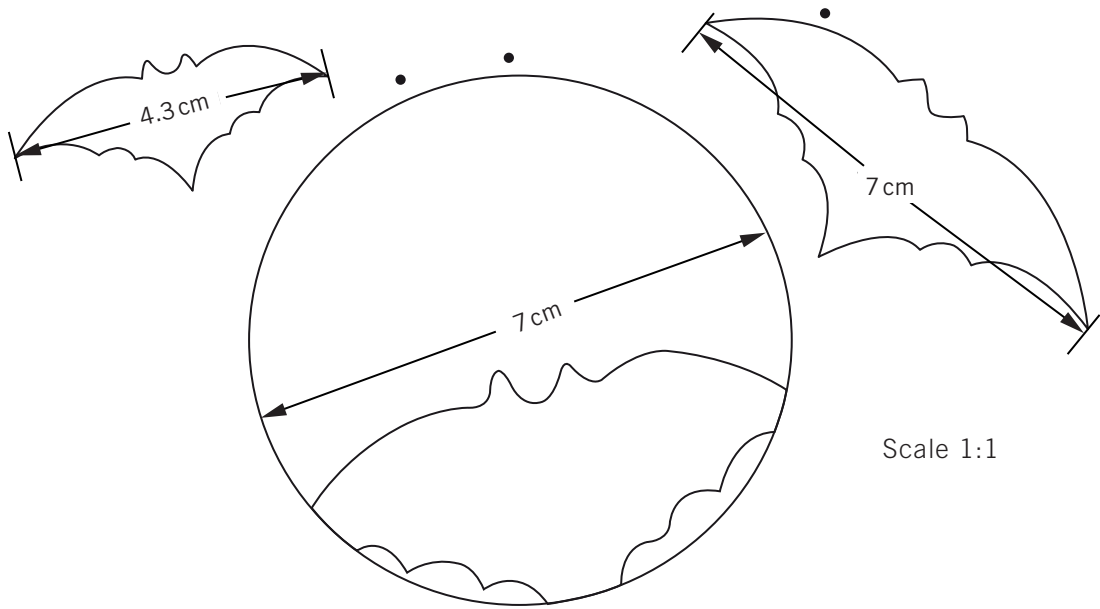
Have also a look at the **text instruction** at the last page!

## STEP 1

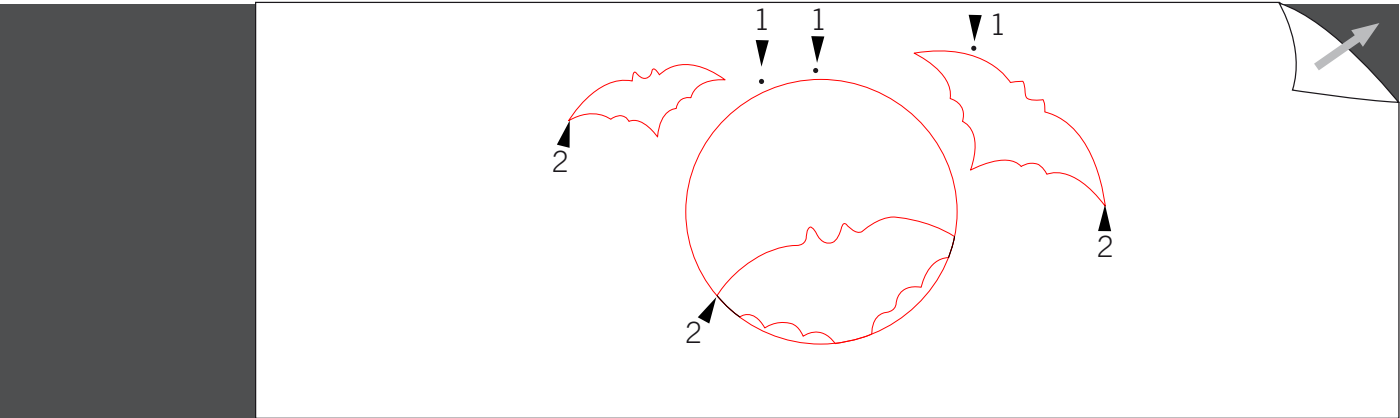
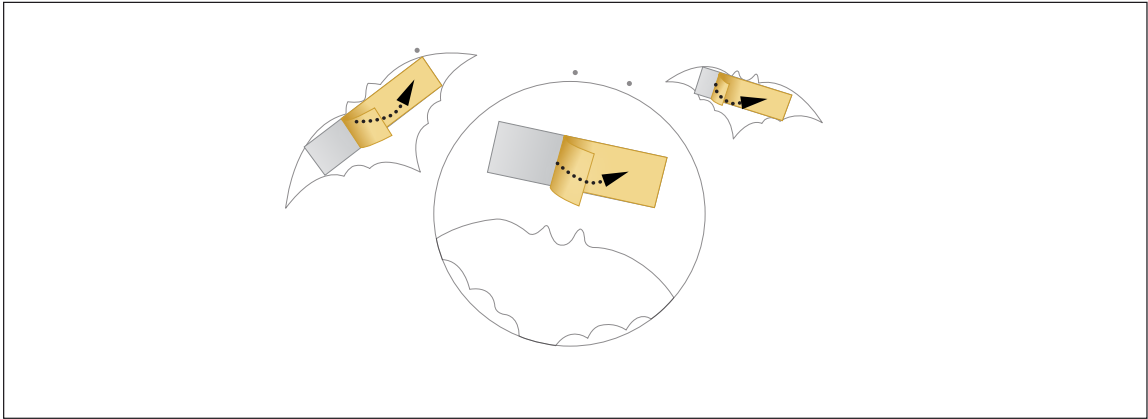


Scale 1:2

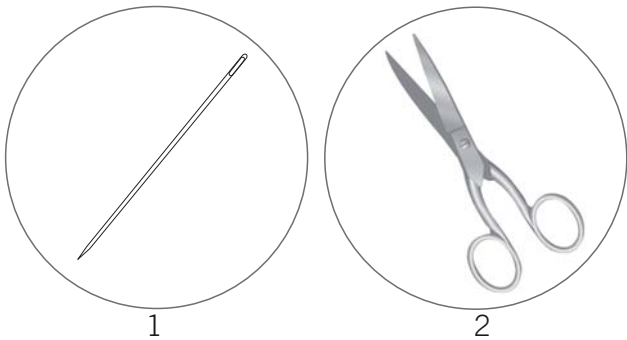
STEP 2



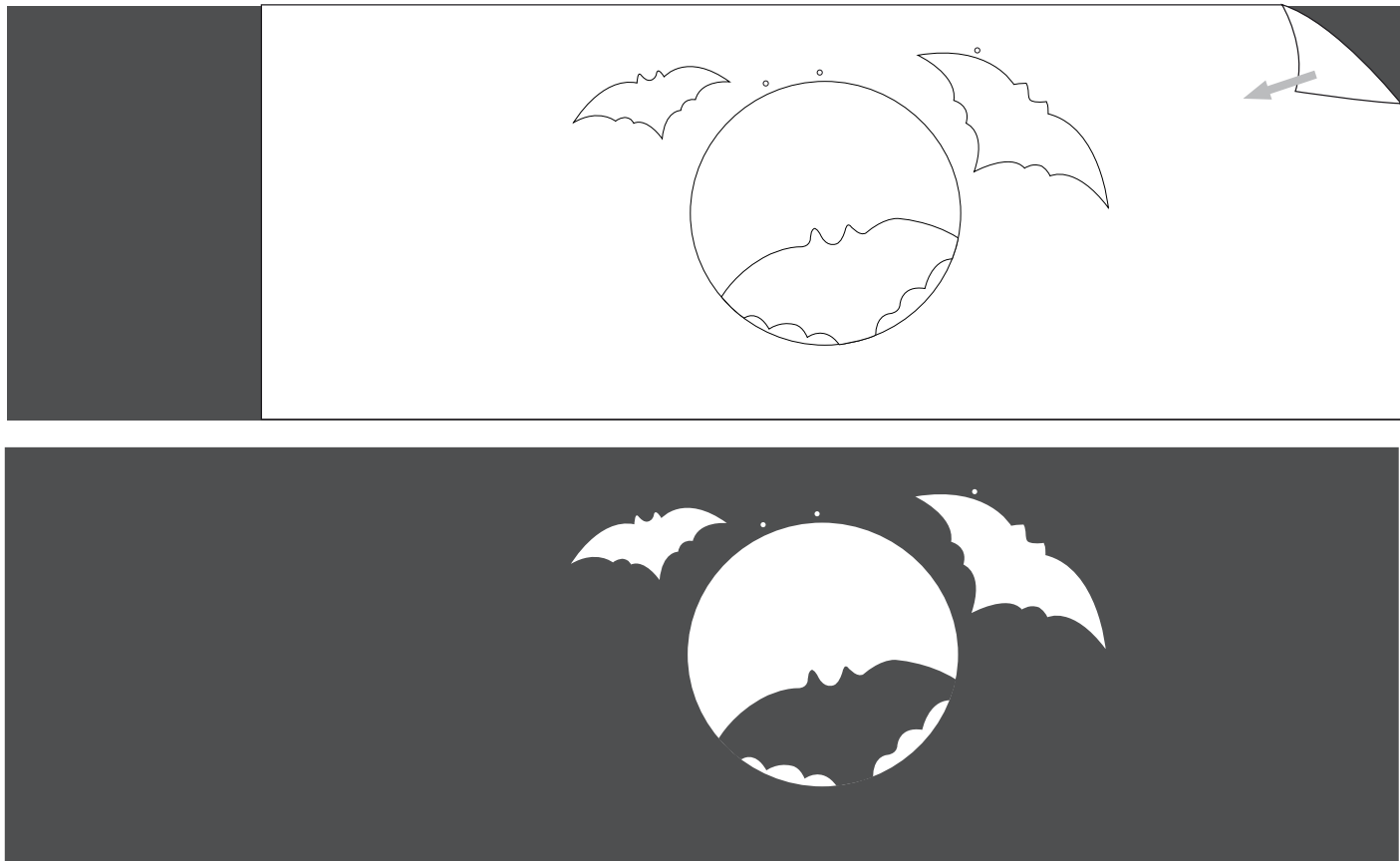
STEP 3



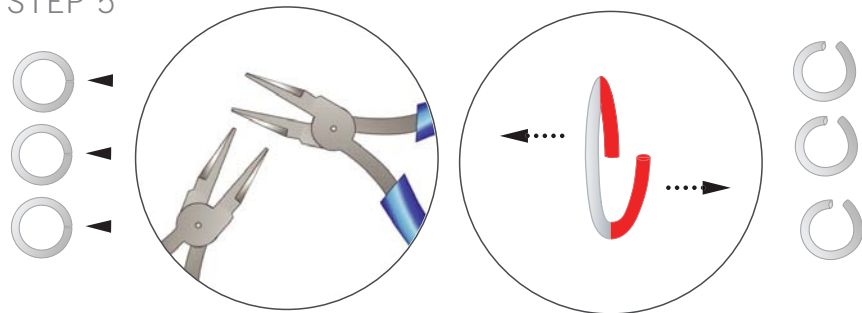
Scale 1:2



STEP 4



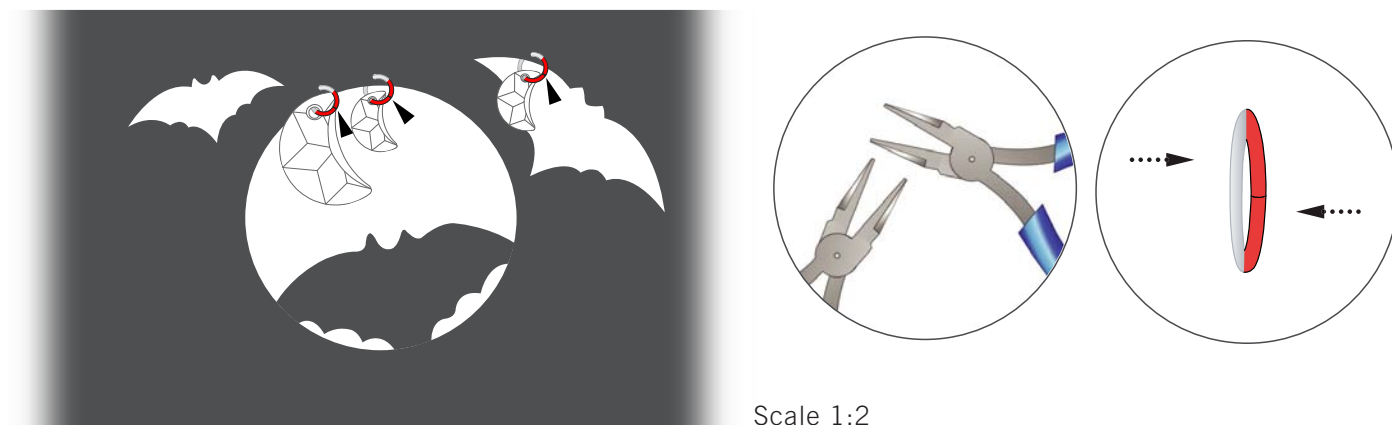
STEP 5



Scale 1:1



## STEP 6



## STEP 7



## CREATE YOUR STYLE Design Project

### Halloween Lantern “Moon”

- STEP 1: Cut a piece of cardboard to 37x11 cm in dimension.
- STEP 2: Print out the drawing in 1:1 to the measurements as shown in illustration.
- STEP 3: Put doubled sided tape on the backside of the drawing positioned as illustrated. Attach it to the cardboard. Pierce holes through the three dots using a thick needle. Cut out along red outline as illustrated and remove the remaining paper.
- STEP 4: Remove paper pattern.
- STEP 5: Open three 8 mm jump rings using flat nose pliers. Insert the jump rings and the Pendants art. 6722 from the SWAROVSKI ELEMENTS assortment into the holes.
- STEP 6: Close the jump rings sideways with flat nose pliers.
- STEP 7: Put double sided tape onto one end of the cardboard and adhere it to the other end in order to form a lantern.