

CREATE
YOUR STYLE

SWAROVSKI



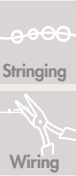
DESIGN PROJECT

BRACELET












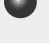


"SHIMMERING GRAPES"

DESIGN PROJECT

BRACELET "SHIMMERING GRAPES"



Swarovski crystals

Article	Product Group	Article No.	Amount	Size	Color	Color Code
	Beads	5000	2 pcs.	3 mm	Jet	280
	Beads	5000	2 pcs.	4 mm	Jet	280
	Beads	5000	8 pcs.	6 mm	Jet	280
	Beads	5000	6 pcs.	8 mm	Jet	280
	Crystal Pearls	5810	2 pcs.	3 mm	Crystal Iridescent Purple Pearl	001 IPP
	Crystal Pearls	5810	1 pc.	4 mm	Crystal Iridescent Purple Pearl	001 IPP
	Crystal Pearls	5810	2 pcs.	4 mm	Crystal Mystic Black Pearl	001 MBPRL
	Crystal Pearls	5810	3 pcs.	6 mm	Crystal Iridescent Purple Pearl	001 IPP
	Crystal Pearls	5810	12 pcs.	6 mm	Crystal Mystic Black Pearl	001 MBPRL
	Crystal Pearls	5810	4 pcs.	8 mm	Crystal Iridescent Purple Pearl	001 IPP
	Crystal Pearls	5810	18 pcs.	8 mm	Crystal Ivory Pearl	001 IVPRL
	Crystal Pearls	5810	4 pcs.	8 mm	Crystal Mystic Black Pearl	001 MBPRL
	Pendants	6734	1 pc.	14 mm	Dark Moss Green	260
	Pendants	6734	1 pc.	14 mm	Peridot	214

Supplies & Tools

Supplies

2x Crimping beads, silver
 Extension chain, silver, 4 cm
 46x Head pins, antique silver
 1x Lobster clasp, silver
 15x Jump rings, 4 mm, antique silver
 2x Jump rings, 4 mm, silver
 2x Jump rings, 6 mm, antique silver
 2x Split rings, silver, 5 mm
 Tigertail, silver, Ø 0.30 mm, 25 cm

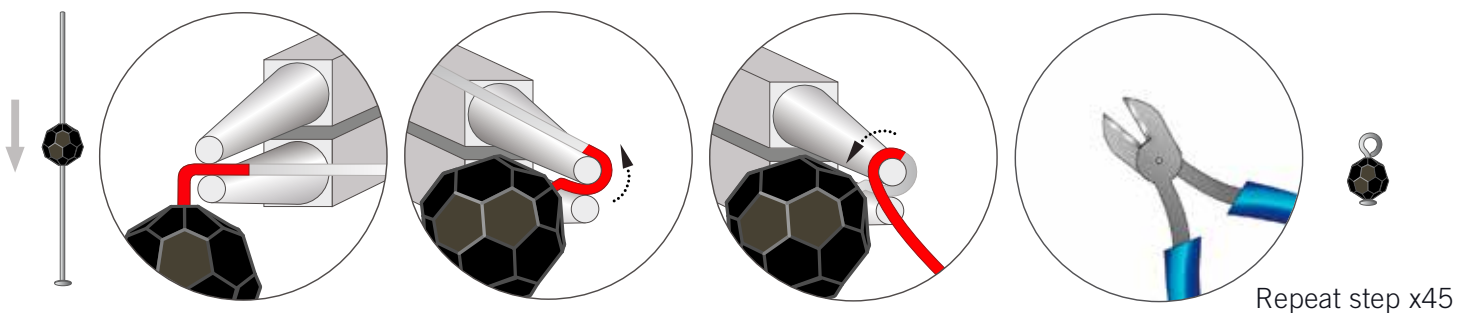
Tools

Crimping pliers
 Flat nose pliers
 Round nose pliers
 Side cutter

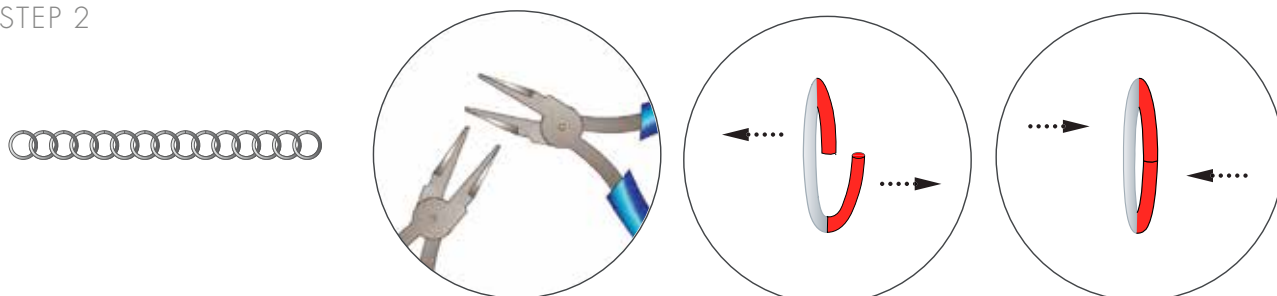
Level of design: **INTERMEDIATE**

Have also a look at the **text instructions** at the last page!

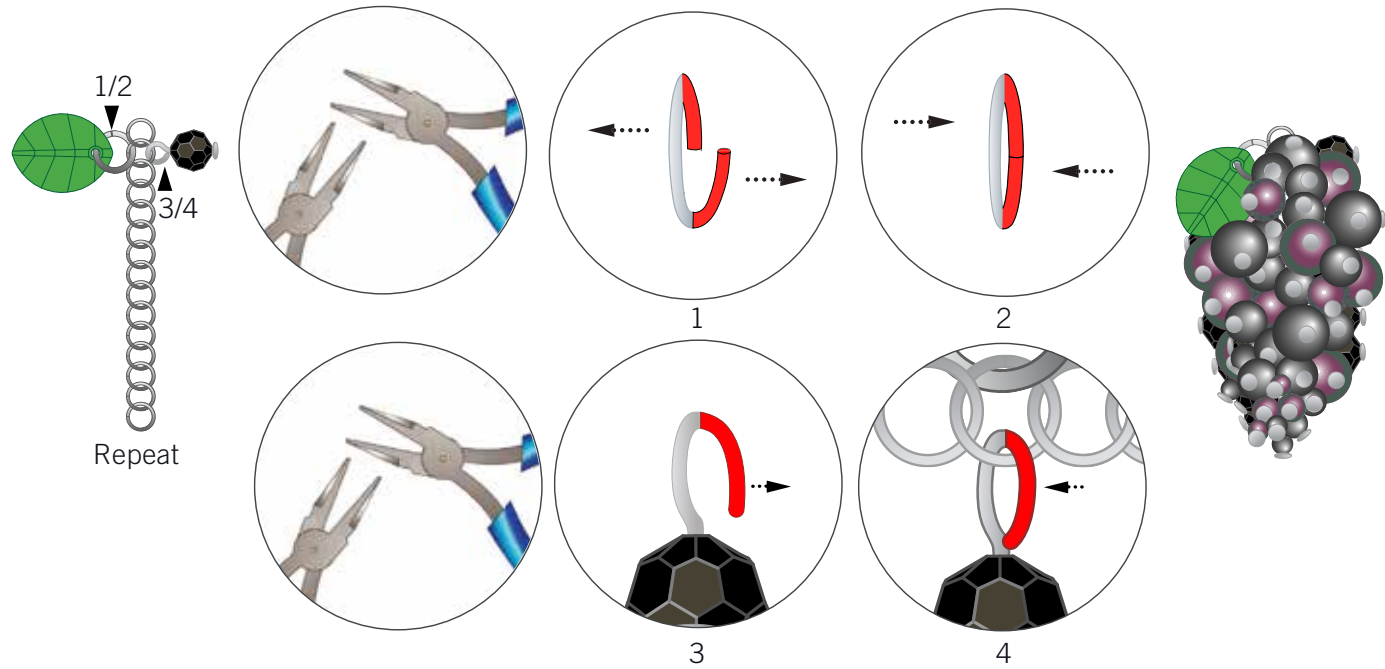
STEP 1



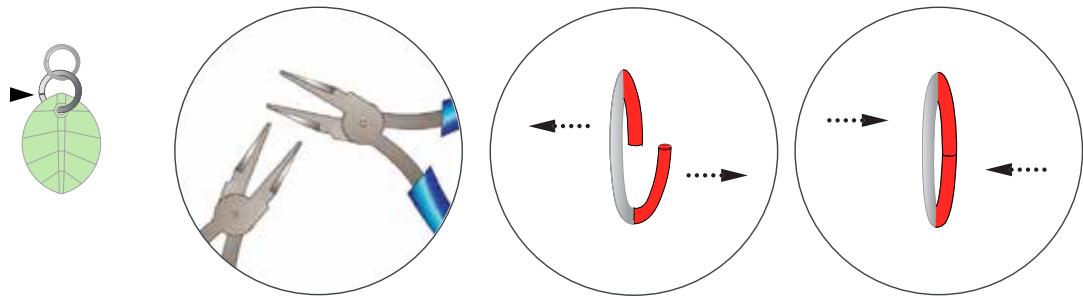
STEP 2



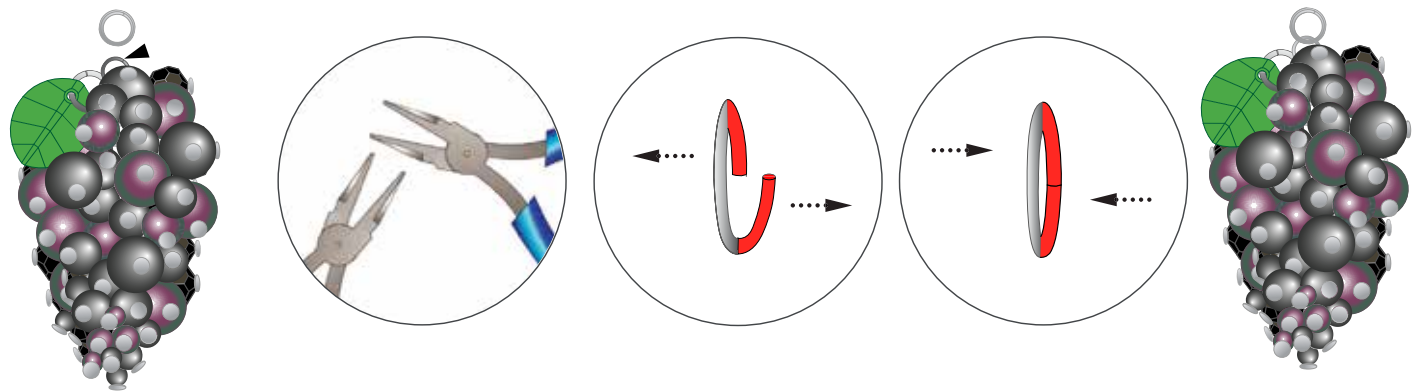
STEP 3



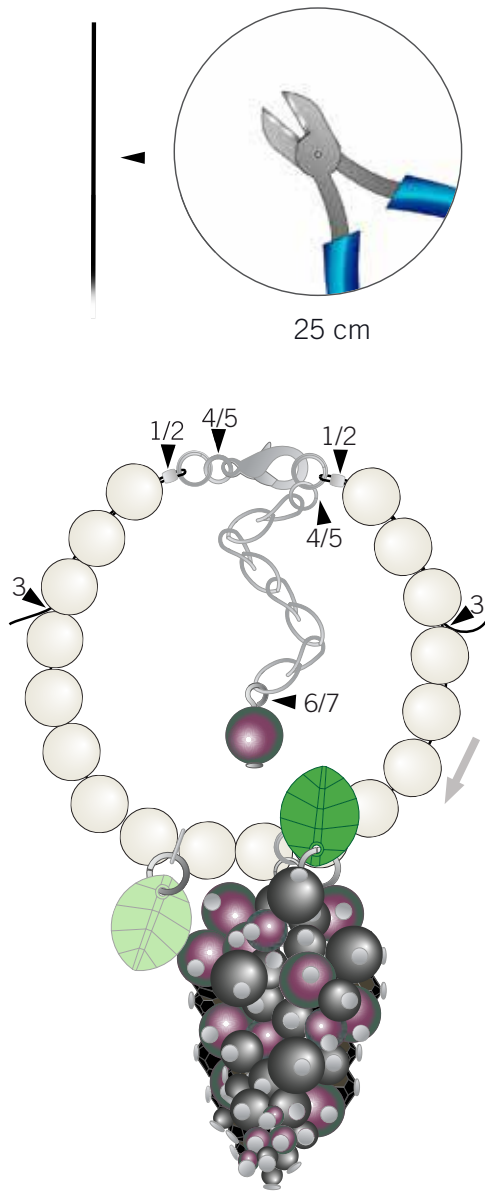
STEP 4



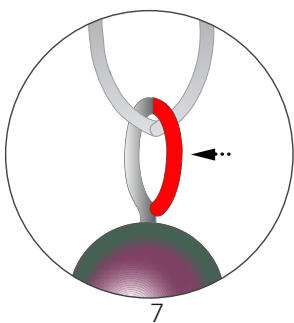
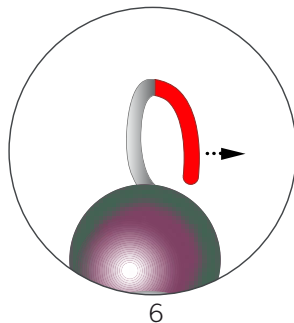
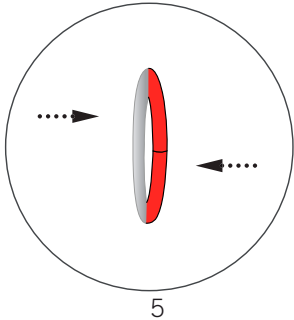
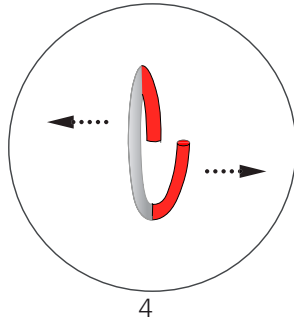
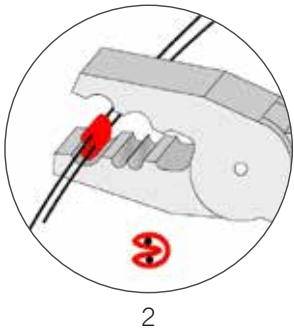
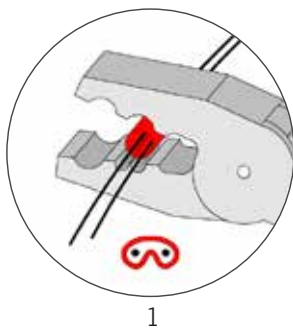
STEP 5

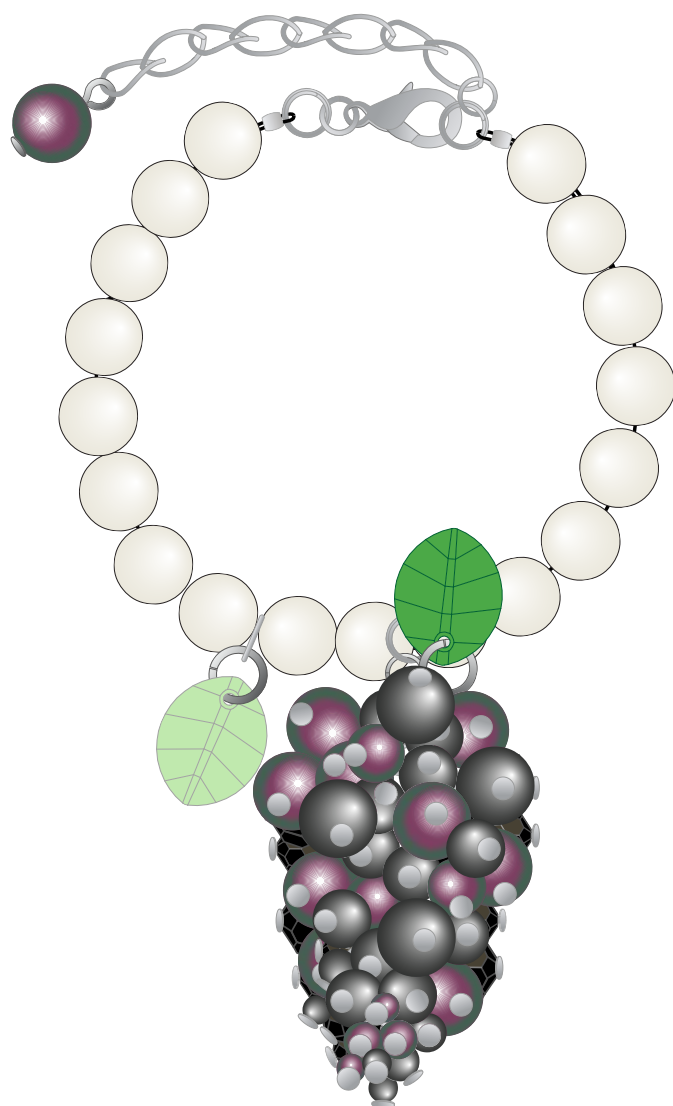


STEP 6



25 cm





DESIGN PROJECT

BRACELET "SHIMMERING GRAPES"



- STEP 1: Insert Swarovski Bead art. 5000 6 mm Jet onto a head pin and turn a loop at the end. Repeat this step 45 more times for all of the Swarovski Crystal Beads & Pearls 3 mm, 4 mm & 6 mm in the material list. The Swarovski Pendants and Swarovski Pearl art. 5810 8 mm Crystal Ivory Pearl will not be attached with a head pin.
- STEP 2: Attach 15 4 mm Antique silver jump rings to each other.
- STEP 3: Attach Swarovski Pendant art. 6734 14 mm Dark Moss Green to the second jump ring in the row using a 6 mm jump ring. Similarly attach 45 of the 46 crystal headpins created in step 1 to this jump ring chain leaving the very first jump ring in the row empty. See illustration for details. (Do not attach one of the 8 mm Crystal Iridescent Purple Crystal Pearls to this chain, as we will use this one at the end of the extension chain.)
- STEP 4: Open a 6 mm Jump ring insert art. 6734 14 mm Peridot and a 5 mm split ring into it.
- STEP 5: Open the first 4 mm Jump ring of the bead and pearl cluster created in step 3 and insert a 5 mm split ring.
- STEP 6: Cut 25 cm of silver tiger tail and insert 8 Swarovski Pearl art. 5810 8 mm Crystal Ivory Pearls onto it. Thread the tiger tail through the 5 mm split ring from step 5 and then insert 2 more art. 5810 8 mm Crystal Ivory Pearl onto the tiger tail. Thread the tiger tail through a split ring with Swarovski Pedant art. 6734 14 mm Peridot, and insert 8 more art. 5810 8 mm Crystal Ivory Pearl. Insert both ends of tiger tail through a crimp bead and then through a split ring, back through the crimp bead and through 3 Swarovski Pearls. Crimp the crimp bead and cut off the extra tiger tail. Attach a lobster clasp and 4 cm extension chain to the split rings on each end using 4 mm jump rings. At the end of this extension chain attach the previously prepared Swarovski Pearl with the head pin as shown in our illustrations with this step.