

CREATE
YOUR STYLE
with SWAROVSKI ELEMENTS



INSTRUCTION PACKAGE

PENDANT

“DAZZLE”

INSTRUCTION PACKAGE

PENDANT “DAZZLE”



SWAROVSKI ELEMENTS

Article	Product Group	Article No.	Amount	Size	Color	Color Code
	Crystal Pearls	5810	1 pc.	8 mm	Crystal Dark Green Pearl	001 841
	Crystal Pearls	5810	2 pcs.	12 mm	Crystal Antique Brass Pearl	001 402
	Crystal Pearls	5810	2 pcs.	12 mm	Crystal Dark Green Pearl	001 841
	Pendants	6621	2 pcs.	18 mm	Crystal Bermuda Blue B	001 BBL
	Pendants	6621	1 pc.	18 mm	Crystal Tabac B	001 TAB
	Pendants	6621	1 pc.	28 mm	Crystal Tabac B	001 TAB

Supplies & Tools

Supplies

2x Cord ending, silver
 5x Head pin, silver
 2x Jump ring, silver, Ø 7 mm
 3x Jump ring, silver, Ø 8 mm
 6x Jump ring, silver, Ø 12 mm
 Satin cord, silver green, Ø 2 mm, 70 cm

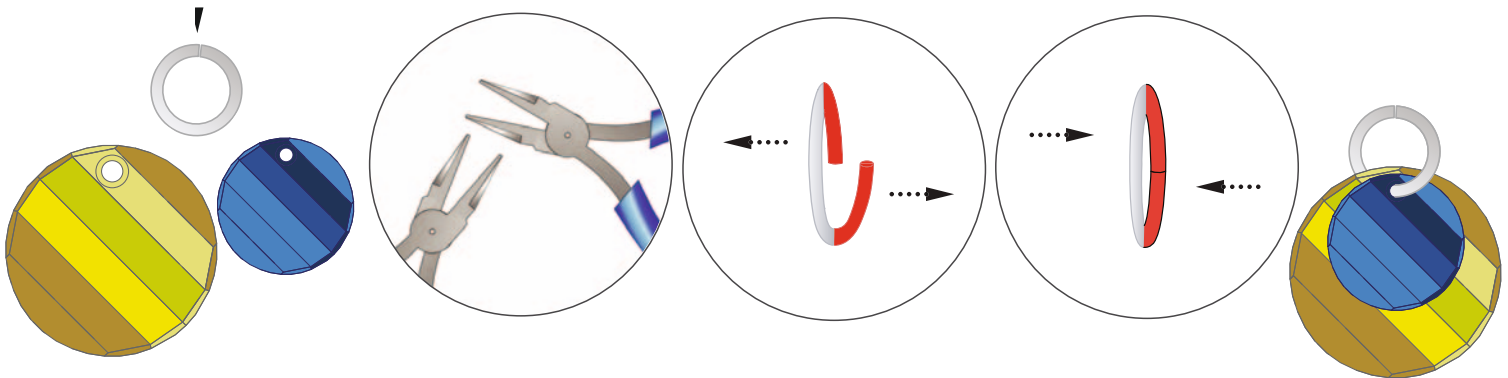
Tools

Flat nose pliers
 Glue
 Round nose pliers
 Scissors
 Side cutter
 Tweezers

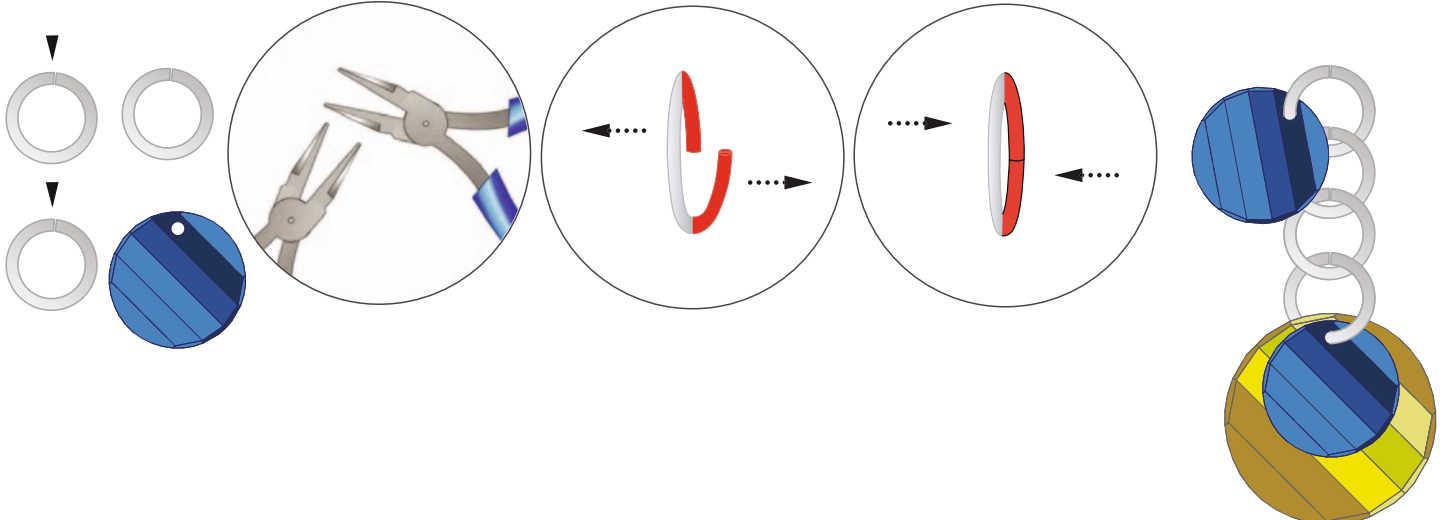
Level of design: BEGINNERS

Have also a look at the **text instruction** at the last page!

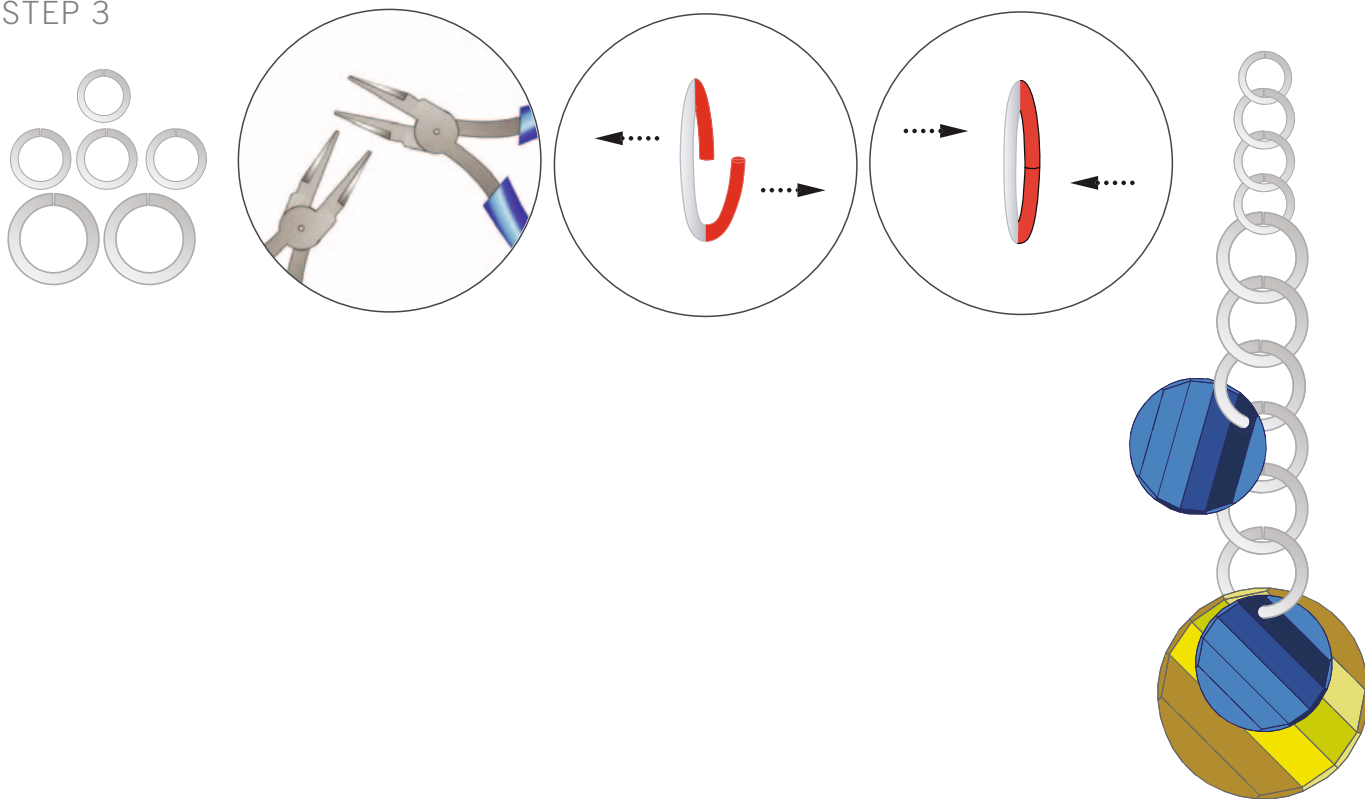
STEP 1



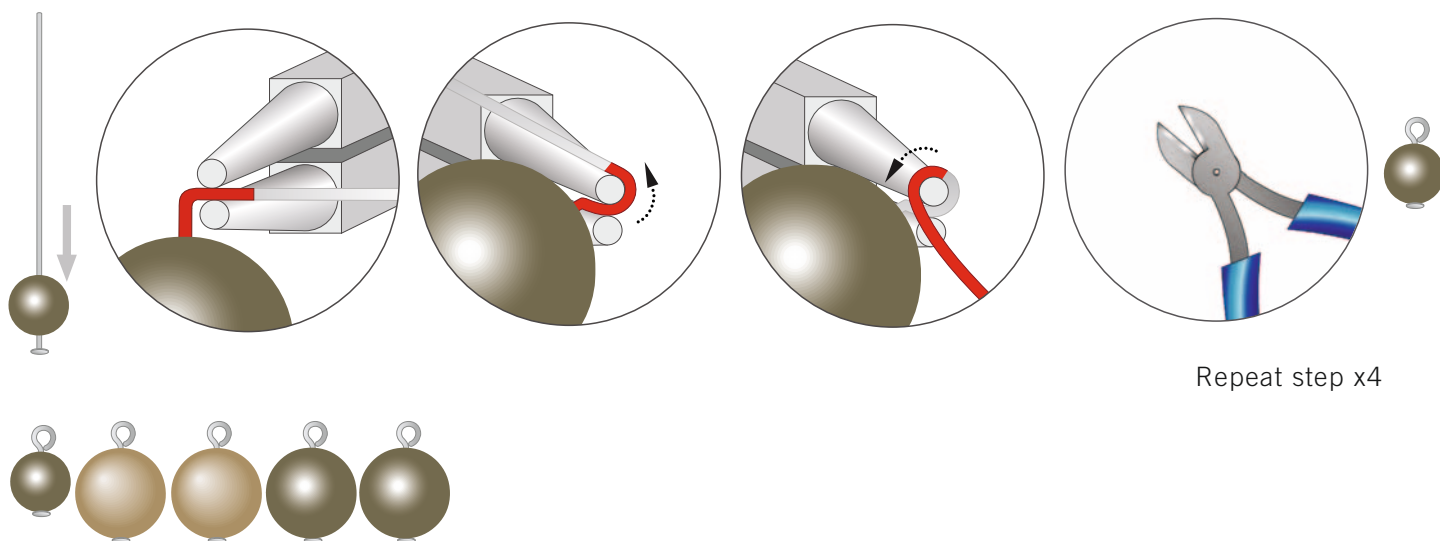
STEP 2



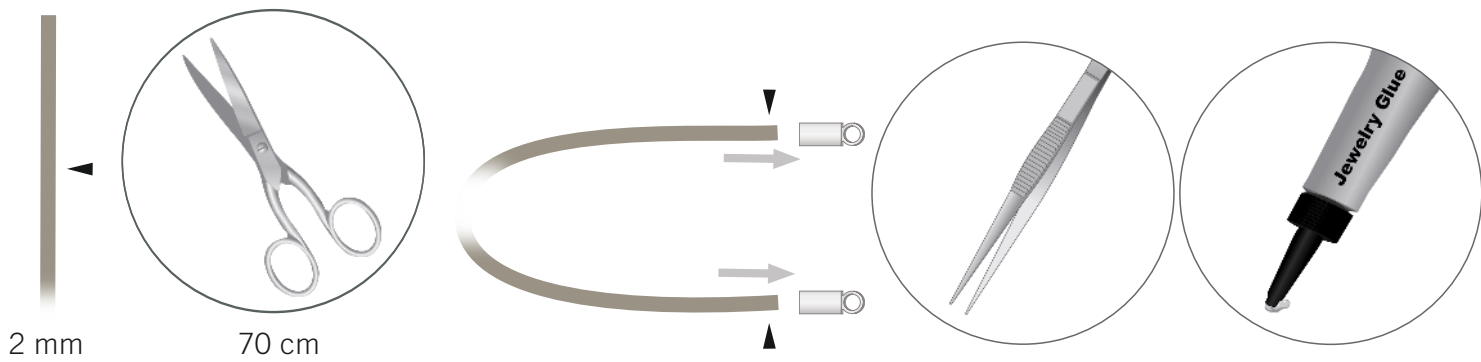
STEP 3



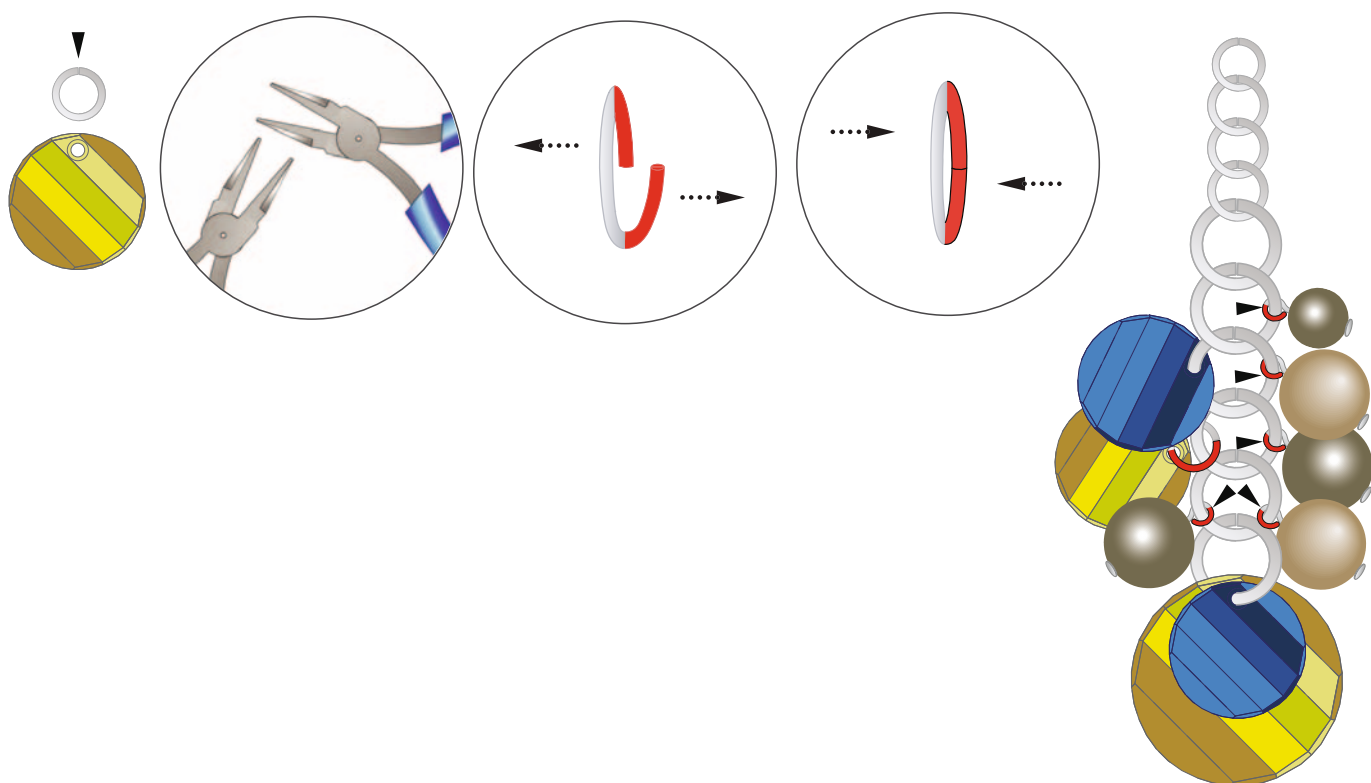
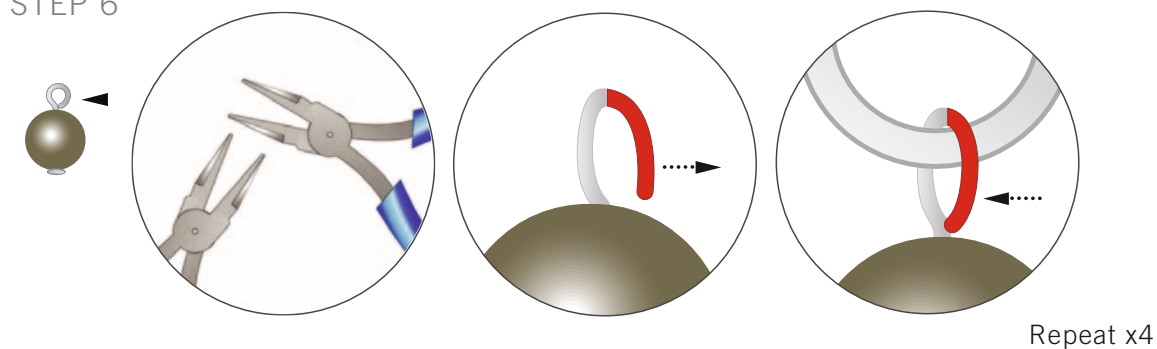
STEP 4



STEP 5



STEP 6



STEP 7





INSTRUCTION PACKAGE

PENDANT “DAZZLE”



- STEP 1: Open a 12mm jump ring using flat nose pliers and slide on the Swarovski Pendant article 6621 28mm Crystal Tabac and article 6621 Crystal Bermuda Blue B as shown in the illustrations.
- STEP 2: Open three more 12mm jump rings and slide onto one of them a Swarovski Pendant article 6621 18mm Crystal Bermuda Blue B and connect all jump rings as shown.
- STEP 3: Add two more 12mm jump rings, three 8mm jump rings and one 7mm jump ring.
- STEP 4: Slide one Swarovski Crystal Pearl article 5810 8mm Crystal Dark Green Pearl onto a head pin, form a loop, but do not close loop completely, (you will need to the open loops to attach to necklace in step 6) and cut off the excess using side cutters. Repeat this step 4 more times.
- STEP 5: Cut 70cm of 2mm satin thread. Glue cord ends onto both thread ends. Use tweezers to help push ends onto cord.
- STEP 6: Open a 7mm jump ring. Slide on one Swarovski Pendant article 6621 18mm Crystal Tabac. Attach pearl head pins from step 4 to jump rings as shown in the illustrations.
- STEP 7: Open a 7mm jump ring and attach to one cord end.
- STEP 8: Open another 7mm jump ring. Attach it to the other cord end and to the created “Dazzle” pendant as shown. Close jump ring. Make sure all jump rings are closed securely.