

CREATE
YOUR STYLE
with SWAROVSKI ELEMENTS

INSTRUCTION PACKAGE

PENDANT “LOTUS”



INSTRUCTION PACKAGE

PENDANT “LOTUS”



SWAROVSKI ELEMENTS

Article	Product Group	Article No.	Amount	Size	Color	Color Code
	Beads	5020	1 pc.	10mm	Black Diamond	215
	Beads	5328	3 pcs.	5mm	Black Diamond	215
	Beads	5328	2 pcs.	6mm	Olivine	228
	Pendants	6908	1 pc.	30mm	Olivine	228
	Pendants	6908	1 pc.	40mm	Crystal Satin	001 SAT

Supplies & Tools

Supplies

Chain, silver, 1 m
 2x Head pin, silver
 4x Jump ring, silver, Ø 4 mm
 1x Lobster, silver, Ø 12 mm
 Wire, silver, Ø 0.8mm, 24 cm

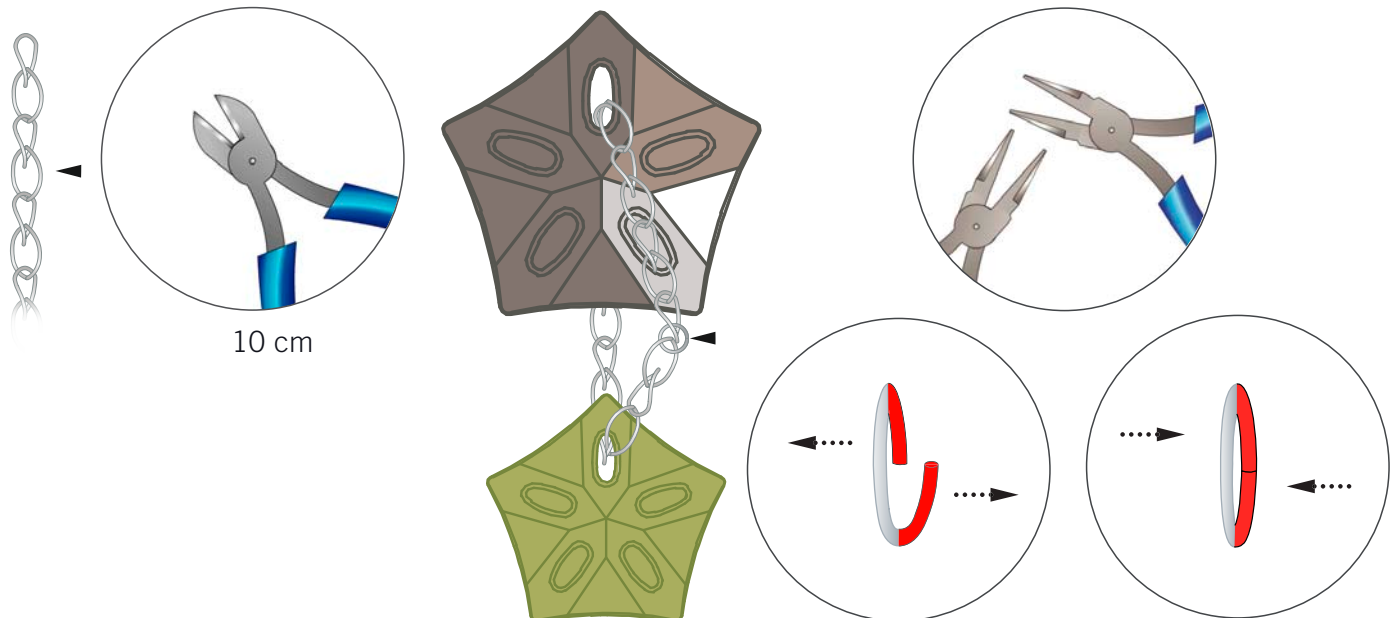
Tools

Flat nose pliers
 Round nose pliers
 Side cutter

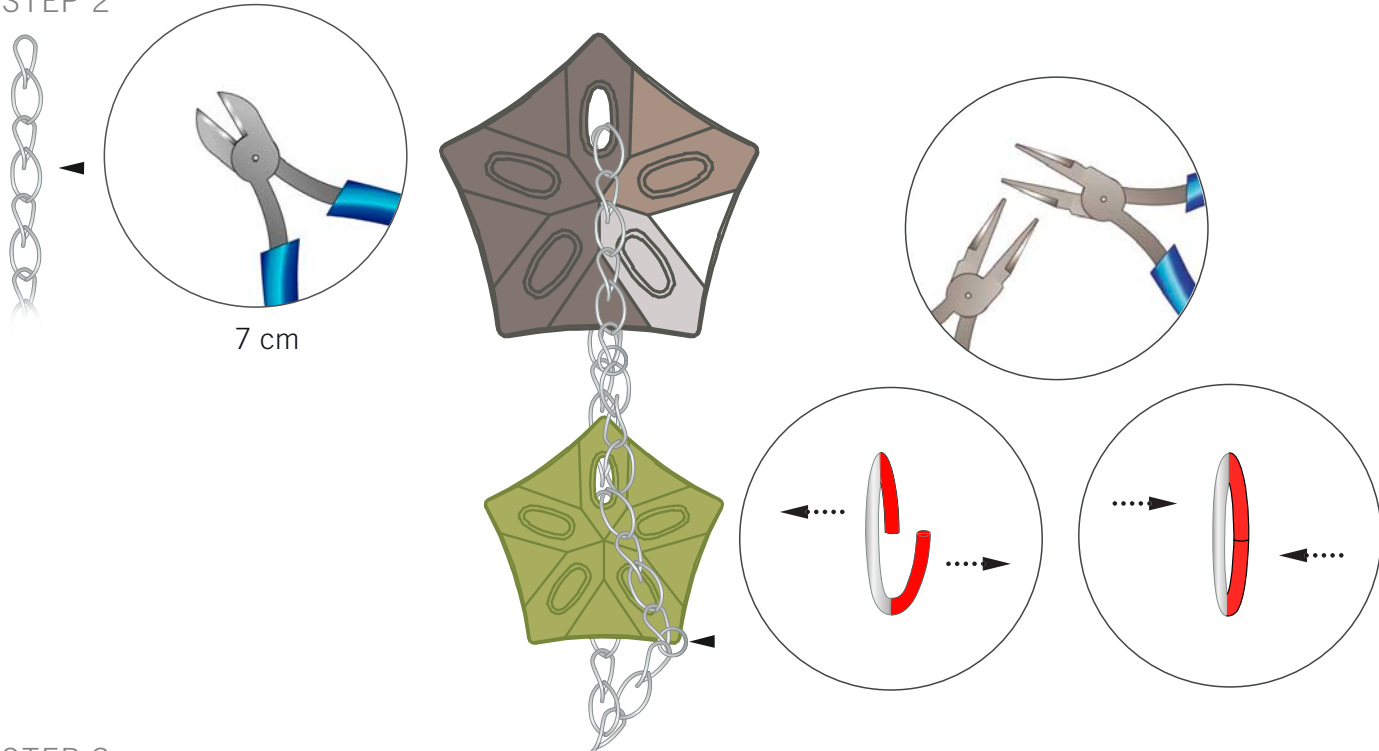
Level of design: BEGINNERS

Have also a look at the **text instruction** at the last page!

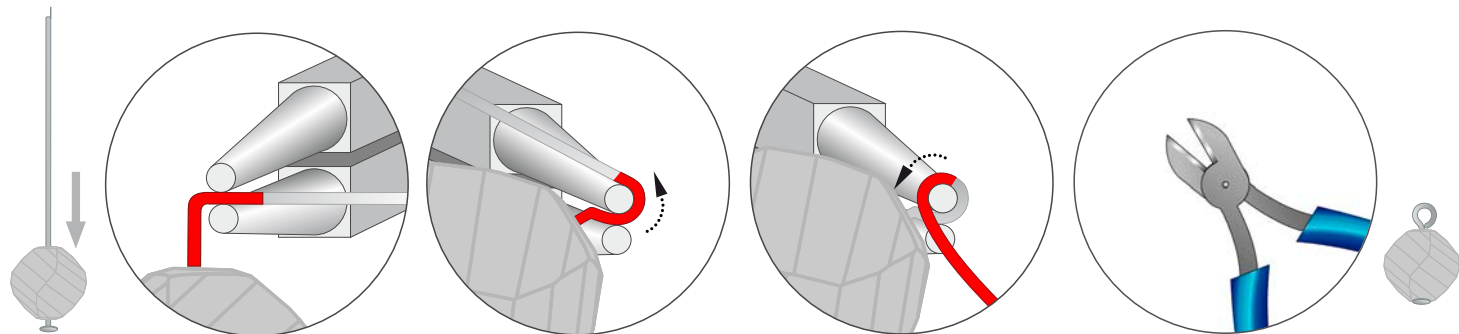
STEP 1



STEP 2



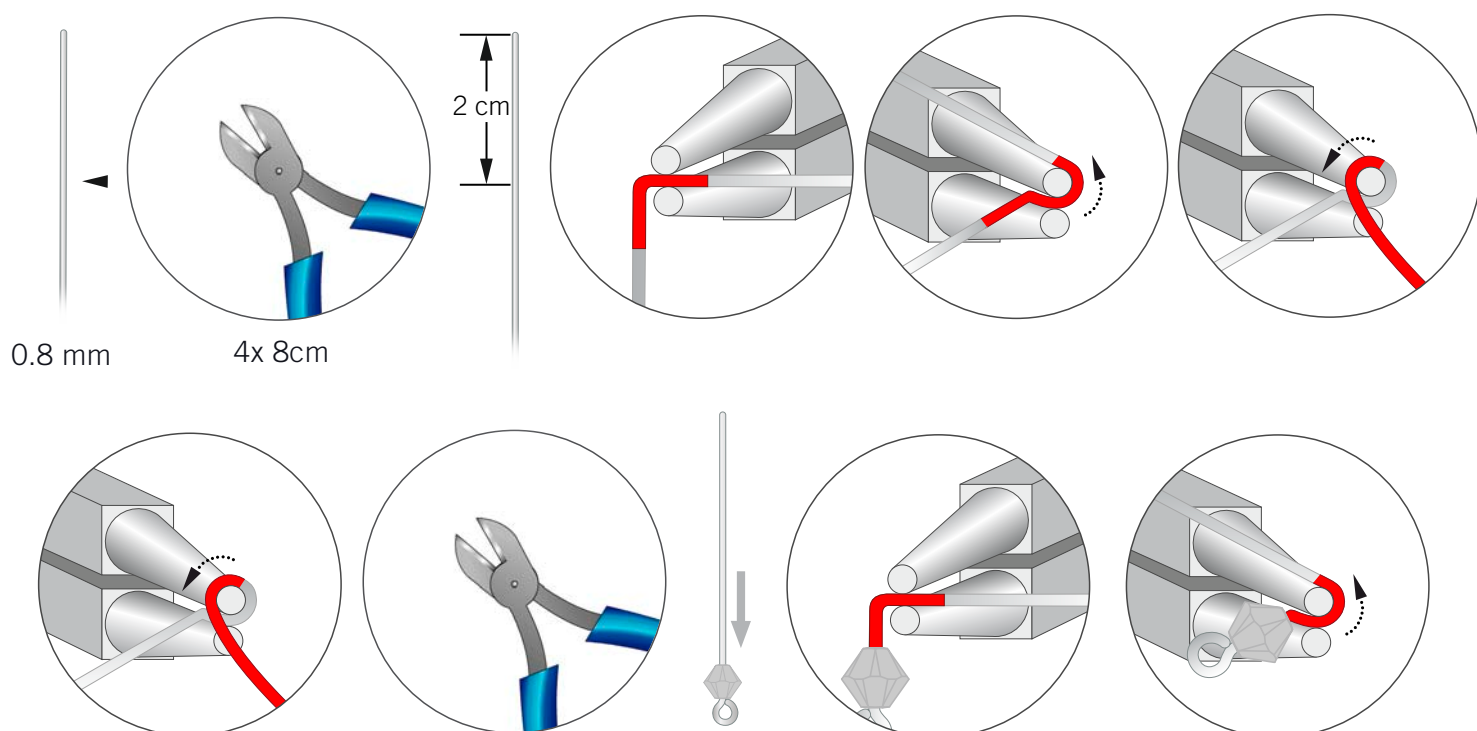
STEP 3

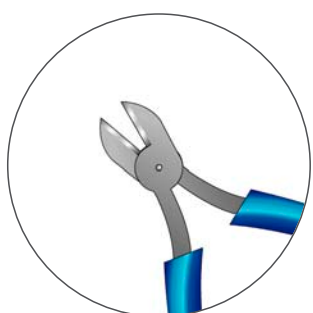
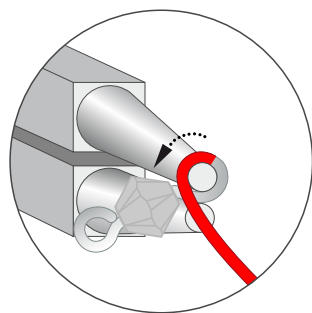


Repeat step x1:

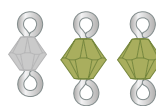


STEP 4

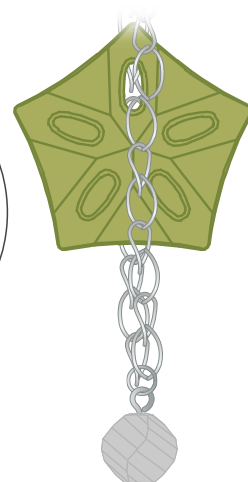
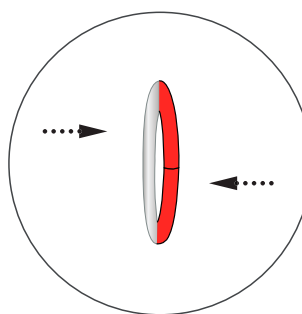
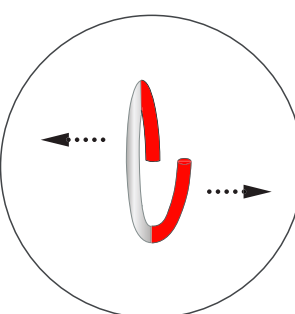
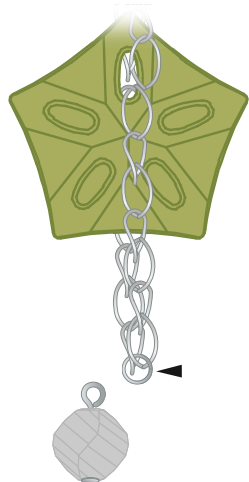




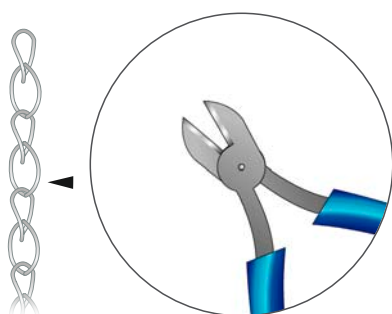
Repeat step x3:



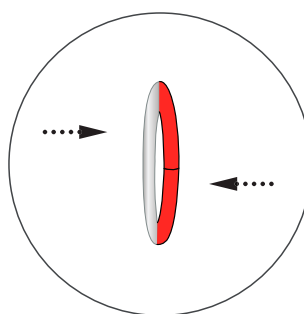
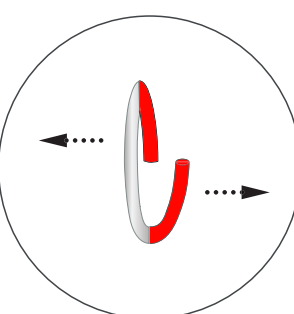
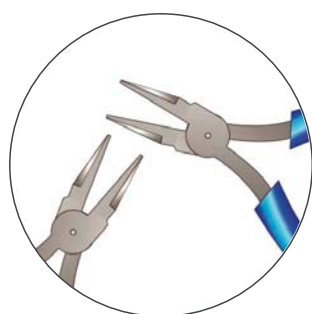
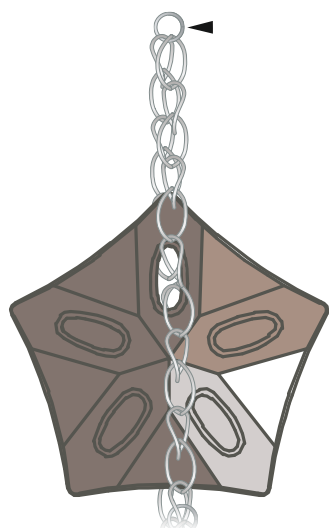
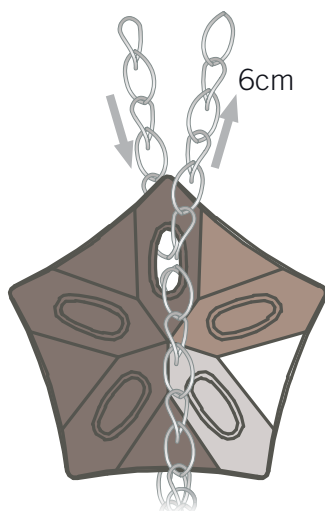
STEP 5



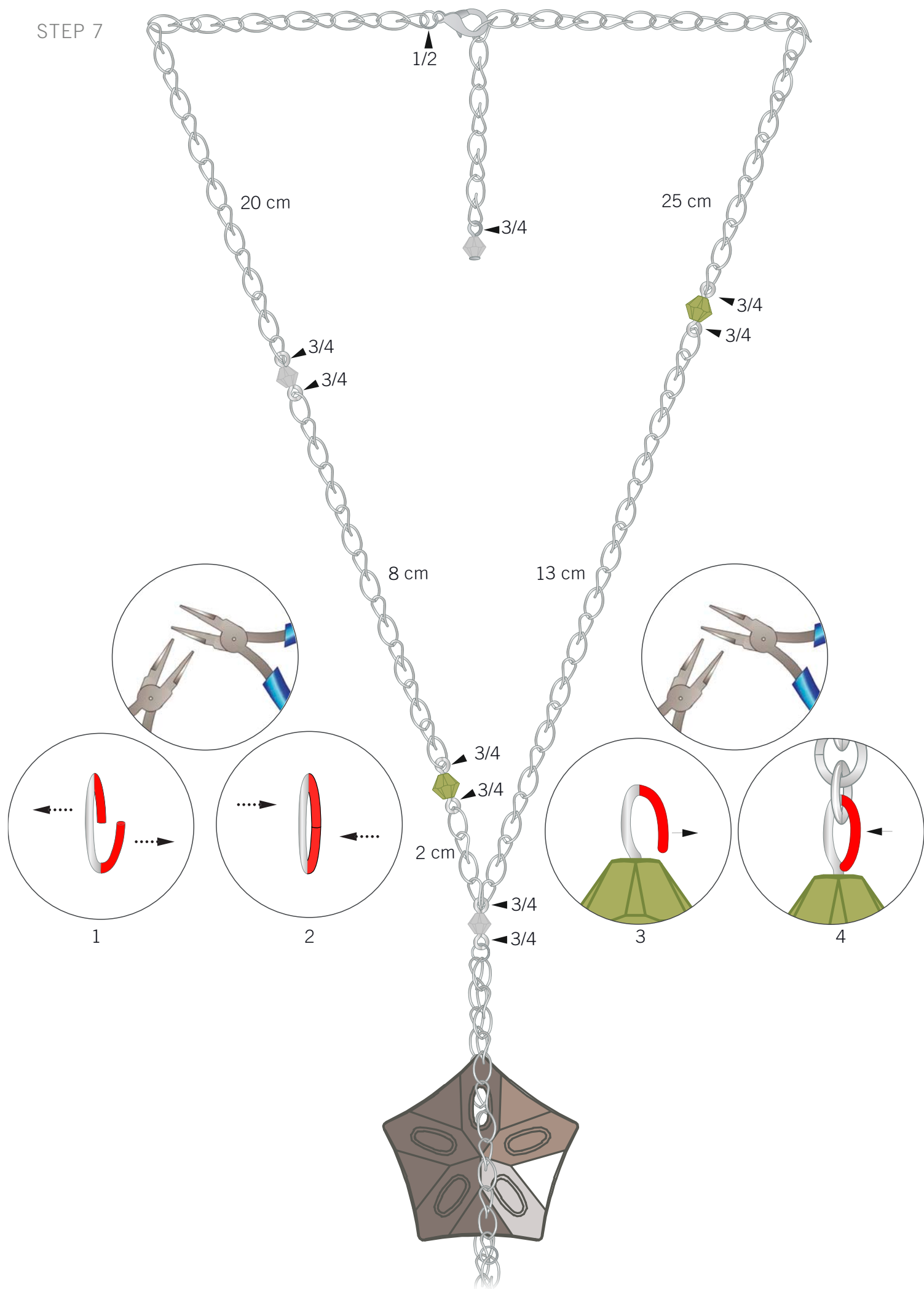
STEP 6

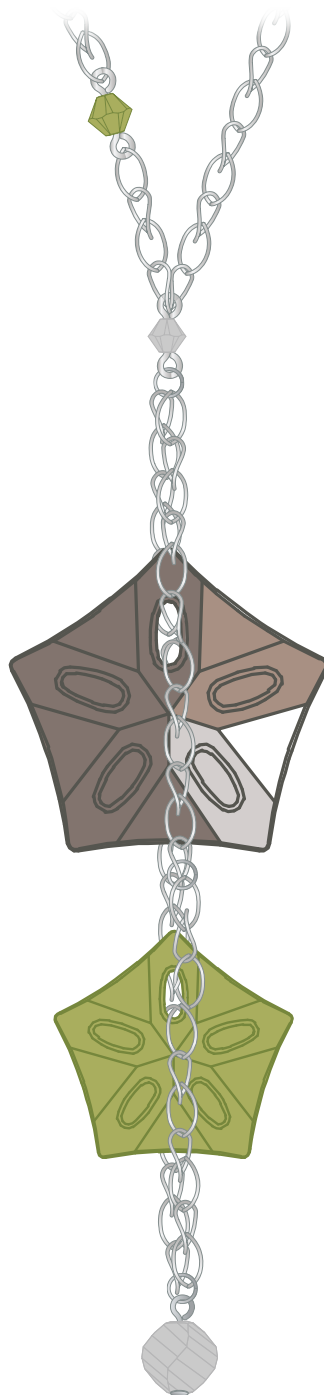
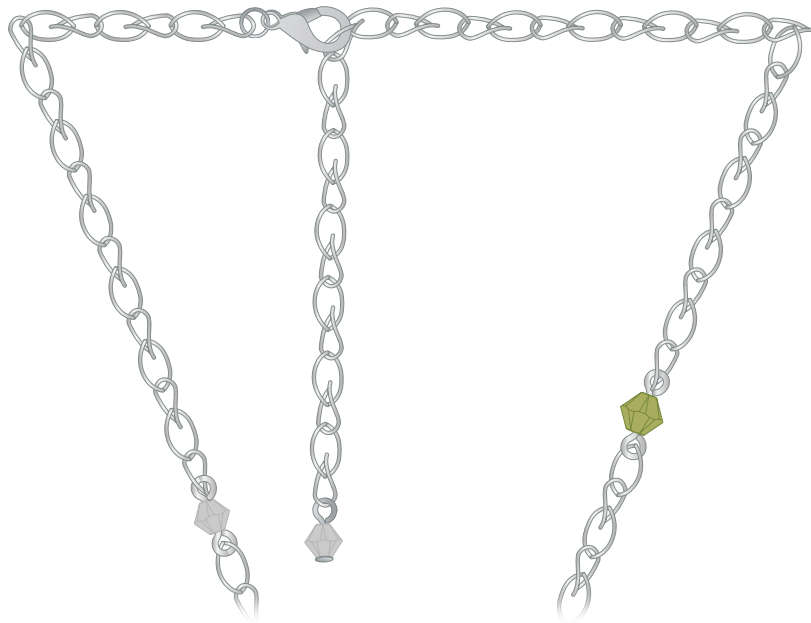


1x 6cm
1x 2 cm
1x 13 cm
1x 8 cm
1x 20 cm
1x 25 cm



STEP 7





INSTRUCTION PACKAGE

PENDANT “LOTUS”



- STEP 1: Cut 10cm of chain and slide it through one opening of the Swarovski Pendant article 6908 40mm Crystal Satin and through one opening of the Pendant art. 6908 30mm Olivine. Attach the two ends of the chain together with a 4mm jump ring as shown in the illustrations.
- STEP 2: Cut 7cm of chain and slide it through the opening of the Swarovski Elements Pendant art. 6908 30mm Olivine and connect both chain ends with a 4mm jump ring.
- STEP 3: Slide one Swarovski Bead art. 5020 10mm Black Diamond onto a head pin and form a loop. Repeat this step using the Swarovski Bead article 5328 5mm Black Diamond.
- STEP 4: Cut four 8cm pieces of 0.8mm thickness wire and bend a loop at one end (do not close loop completely). Slide a Swarovski Bead art. 5328 5mm Black Diamond onto it and bend another loop at the other end of the wire creating an eye pin, (do not close loop completely). Cut off excess wire. Repeat this step three more times.
- STEP 5: Open the jump ring used to attach the chain through the Swarovski Pendant in Olivine and insert one of the Swarovski Beads art. 5020 10mm Black Diamond head pins, onto it.
- STEP 6: Cut chains of 6cm, 2cm, 13cm, 8cm, 20cm, and 25cm. Insert the 6cm chain through the Swarovski Pendant art. 6908 Crystal Satin and attach the ends using a 4mm jump ring.
- STEP 7: Connect all the chains to the open loops on the beaded eye pins as shown in the illustrations. Connect a lobster clasp to one end of the chain with a 4mm jump ring as shown.