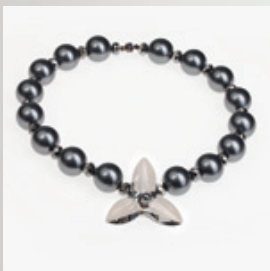


CREATE
YOUR STYLE
with SWAROVSKI ELEMENTS



CREATE YOUR STYLE
MINI PROJECTS

INNOVATIONS

FALL/WINTER 2012/2013





MINI PROJECT "INNOVATIONS FALL/WINTER 2012/13"

RHOMBUS CUBED NECKLACE

Materials

SWAROVSKI ELEMENTS

Product Group	Article No.	Amount	Size	Color	Color Code
Pendants	6320	4 pcs.	14 mm	Crystal Red Magma	001 REDM
Pendants	6320	3 pcs.	19 mm	Crystal Red Magma	001 REDM
Pendants	6320	3 pcs.	27 mm	Crystal Red Magma	001 REDM

Supplies: 2 TierraCast med quatrefoil (94-3140-13)
1 TierraCast 1/2" Anna's toggle (94-6154-13)
18" black chain
2' 3mm black suede lace

1 TierraCast lg quatrefoil (94-3141-13)
21 TierraCast jump rings (01-0020-13)
3' 24 gauge bronze wire
2' 6mm sage ultra suede lace

Instructions

- STEP 1: To create dangle sets cut chain into three 2.5" pieces, three 1.5" pieces, and three 0.5" pieces.
- STEP 2: Open all 21 jump rings.
- STEP 3: Add one Swarovski Rhombus Pendant article 6320 27 mm to open jump ring and one 2.5" chain. Close jump ring. Repeat two more times.
- STEP 4: Add one Swarovski Rhombus Pendant article 6320 19 mm to open jump ring and one 1.5" chain. Close jump ring. Repeat two more times.
- STEP 5: Add one Swarovski Rhombus Pendant article 6320 14 mm to open jump ring and one 0.5" chain. Close jump ring. Repeat two more times.
- STEP 6: Take one open jump ring and add one of each length. Close jump ring. Repeat two more times.
- STEP 7: Using open jump ring add one rhombus set and one quatrefoil. Close jump ring. Repeat two more times.

[Continuation on next page](#)

"Cubed Necklace", page 2

- STEP 8: Using open jump ring add to quatrefoil link and close jump ring. Repeat two more times.
- STEP 9: Keeping the black suede on top of the sage suede then fold in half. Slide on the loose jump ring from the large quatrefoil set.
- STEP 10: Cut three 5" pieces of wire.
- STEP 11: While holding the suede lace approximately 0.5" from the jump ring begin wire wrapping 4–6 times. Clip tails and tuck in wire ends.
- STEP 12: Using one side of the suede slide on the loose jump ring from the medium quatrefoil set. Make sure to keep a 1.5" separation between the medium and large quatrefoil unit. While holding the suede lace approximately 0.5" from the jump ring begin wire wrapping 4–6 times. Clip tails and tuck in wire ends. Repeat for opposite side.
- STEP 13: Attach an open jump ring to each side of the toggle and close jump ring.
- STEP 14: Slide the one end of the suede lace through one end of the toggle set with an overlap of 1" (adjust length as needed). While holding the suede lace approximately ½" from the jump ring begin wire wrapping 4–6 times. Clip tails and tuck in wire ends. Repeat for other side.
- STEP 15: Add remaining jump ring to Swarovski Rhombus Pendant article 6320 14 mm Rhombus. Then add to the circle side of the toggle and close jump ring.



CREATE
YOUR STYLE
with SWAROVSKI ELEMENTS

MINI PROJECT "INNOVATIONS FALL/WINTER 2012/13"

RHOMBUS CHANDELIER EARRINGS

Materials

SWAROVSKI ELEMENTS

Product Group	Article No.	Amount	Size	Color	Color Code
Pendants	6320	4 pcs.	14mm	Crystal Red Magma	001 REDM
Pendants	6320	4 pcs.	19mm	Crystal Red Magma	001 REDM

Supplies: 2 TerraCast med quatrefoil (94-3140-13)
1 TerraCast oval key (94-2336-13)
1 TerraCast ear wire (90-5179-01)

1 TerraCast fleur (94-2340-13)
16 TerraCast jump rings (01-0020-13)
8" black chain

Instructions

- STEP 1: Cut chain into two 1.5" pieces, four 1" pieces and four 0.5" pieces.
- STEP 2: Open all jump rings.
- STEP 3: Using open jump ring add one fleur charm and one 1.5" chain piece and close jump ring. Repeat for key charm.
- STEP 4: Using open jump ring add one Swarovski Rhombus Pendant article 6320 19mm and one 1" chain piece and close jump ring. Repeat three times.
- STEP 5: Using open jump ring add one Swarovski Rhombus Pendant article 6320 14mm and one 0.5" chain piece and close jump ring. Repeat three times.
- STEP 6: Using open jump ring add (in order) one 0.5" rhombus unit, one 1" rhombus unit, one charm unit, one 1" rhombus unit and one 0.5" rhombus unit. Close jump ring. Repeat one more time.
- STEP 7: Using open jump ring add one complete crystal unit and one quatrefoil. Close jump ring. Repeat one more time.
- STEP 8: Using open jump ring add quatrefoil unit and ear wire. Close jump ring. Repeat one more time.



CREATE
YOUR STYLE
with SWAROVSKI ELEMENTS

MINI PROJECT "INNOVATIONS FALL/WINTER 2012/13"

OVAL BEAD RINGED BRACELET

Materials

SWAROVSKI ELEMENTS

Product Group	Article No.	Amount	Size	Color	Color Code
Beads	5050	7 pcs.	14x10mm	Crystal Red Magma	001 REDM

Supplies: 7 TierraCast 1" hammertone rings (94-3095-27)
2 TierraCast oval jump rings (01-0018-27)
28" 3mm ultra suede lace

6 TierraCast jump rings (01-0020-27)
1 magnet clasp bronze

Instructions

- STEP 1: Cut seven 4" pieces of suede lace.
- STEP 2: Thread one piece of suede through one Oval Bead article 5050 from the SWAROVSKI ELEMENTS assortment. Repeat 6 more times.
- STEP 3: Take one ring and using overhand knot tie on the Swarovski Bead article 5050 on each side of the ring. Repeat 6 more times.
- STEP 4: Open all six round jump rings. Using each open jump link all 7 hammertone rings together.
- STEP 5: Open 2 oval jump rings. Using one jump ring attach one end of hammertone ring chain to one half of the magnetic clasp. Close ring. Repeat for other side.



MINI PROJECT "INNOVATIONS FALL/WINTER 2012/13"

OVAL BEAD NECKLACE & EARRINGS

Materials

SWAROVSKI ELEMENTS

Product Group	Article No.	Amount	Size	Color	Color Code
Beads	5050	9 pcs.	14x10mm	Fuchsia	502
Beads	5050	3 pcs.	22x16mm	Fuchsia	502
Beads	5328	2 pcs.	4mm	Fuchsia	502

Supplies: 1 TierraCast pair ear wire blanks (90-5129-13)

30" oval chain

2' 20 gauge wire

Instructions for Earrings

STEP 1: Cut 2 oval links from chain length.

STEP 2: Cut two pieces of 1.5" wire. Using the wire create an open loop at each end of the Oval Bead article 5050 14x10mm from the SWAROVSKI ELEMENTS assortment. Repeat once.

STEP 3: Open side of bead loop and attach to one oval chain link. Repeat once.

STEP 4: Add 1 Swarovski XILION Bead article 5328 4mm to blank ear wire. Turn a loop. Open that loop and attach to remaining loop of oval bead link. Close loop. Repeat once.

Instructions for Necklace

STEP 1: Cut 10 oval links from chain length.

STEP 2: Cut 7 pieces of 1.5" wire. Using the wire create an open loop at each end of the Oval Bead article 5050 14x10mm from the SWAROVSKI ELEMENTS assortment. Repeat 6 more times.

[Continuation on next page](#)

"Oval Bead Necklace", page 2

- STEP 3: Cut 3 pieces of 2.5" wire. Using the wire create an open loop at each end of the Oval Bead article 5050 22x16mm from the SWAROVSKI ELEMENTS assortment. Repeat 2 more times.
- STEP 4: Open side of a bead loop and attach to one oval chain link. Repeat 9 more time.
- STEP 5: Using the 7 small Swarovski Oval Bead links article 5050 14x10mm attach to each other (creating a crystal bead between each chain link).
- STEP 6: Using the 3 large Swarovski Oval Bead links repeat as in step 5.
- STEP 7: Cut remaining chain in half. Attach each side of small link pattern to remaining chain. Attach large oval link chain to remaining open ends to create continuous linked necklace.



CREATE YOUR STYLE

with SWAROVSKI ELEMENTS

MINI PROJECT “INNOVATIONS FALL/WINTER 2012/13”

DOUBLE HELIX LARIAT

Materials

SWAROVSKI ELEMENTS

Product Group	Article No.	Amount	Size	Color	Color Code
Beads	5030	12 pcs.	8 mm	Crystal	001
Beads	5040	23 pcs.	6 mm	White Opal	234
Beads	5328	70 pcs.	4 mm	Crystal Moonlight	001 MOL
Beads	5328	65 pcs.	3 mm	Light Azore	361
Beads	5328	11 pcs.	4 mm	Light Azore	361
Beads	5601	23 pcs.	6 mm	Crystal	001
Pendants	6020	1 pc.	30 mm	Crystal	001
Pendants	6020	1 pc.	37 mm	Crystal	001

Supplies: 1 TierraCast 1 ¼” Radiant Ring (94-3112-61)
1 TierraCast 1” Spiral Ring (94-3133-12)
1 TierraCast 5/8” Spiral Ring (94-3138-12)
2 2x2 sterling silver crimp tubes
48” 10mm organza ribbon aqua

1 TierraCast 1” Hammertone Ring (94-3095-61)
2 TierraCast ¾” Spiral Ring (94-3135-12)
36” .014 Beading Wire
2 3mm sterling silver crimp covers
18” 24 gauge wire

Instructions

STEP 1: Cut two 10” pieces of ribbon. Cut two 12” pieces of ribbon. Cut wire into two 9” pieces.

STEP 2: Using one 10” piece of ribbon thread through Swarovski Helix Pendant article 6020 37 mm with tails matching. Using an overhand knot, tie the Helix Pendant to the Radiant ring.

[Continuation on next page](#)

"Double Helix Lariat", page 2

- STEP 3: Hold $\frac{3}{4}$ " Spiral Ring onto the inside, top portion of the Radiant ring. Hold the 1" Spiral Ring onto the outside top portion of the Radiant ring. Using one piece of wire, wire wrap the ring sets together, about 4–6 times. (Note: keep all three rings flat and next to each other, do not overlap the rings.) Cut the tails of the wire and tuck into the rings. Using one 12" piece of ribbon, wrap around the wire wrap twice (so wire doesn't show). Perform an overhand knot where the knot sits on top of the inside part of the 1" Spiral Ring.
- STEP 4: Repeat step 3 substituting the Swarovski Helix Pendant article 6020 30mm for the Helix Pendant article 6020 37mm, the Hammertone ring in place of the Radiant ring, the $\frac{5}{8}$ " Spiral ring in place of the $\frac{3}{4}$ " Spiral ring and the $\frac{3}{4}$ " Spiral ring in place of the 1" Spiral ring.
- STEP 5: At the end of the 0.014 beading wire, put on one crimp bead and (9) Swarovski XILION Beads article 5328 3mm Light Azore, slide on one Helix unit from the top of the ring and loop wire tail back through crimp bead, then crimp the crimp bead and cover with crimp cover. (Note: the 9 Swarovski XILION Beads article 5328 3mm Light Azore create a loop in which the top ring is captured.)
- STEP 6: String in order (1) Swarovski XILION Bead art. 5328 4mm Moonlight, (1) Swarovski Briolette Bead art. 5040 6mm White Opal, (1) Bead art. 5328 4mm Moonlight, (1) Bead art. 3mm Light Azore, (1) Swarovski Cube Bead art. 5601 6mm Crystal, (1) Bead art. 5328 3mm Light Azore, (1) Bead art. 5328 4mm Moonlight, (1) Swarovski Luccerna Bead art. 5030 8mm Crystal, (1) Bead art. 5328 4mm Moonlight, (1) Bead art. 5328 3mm Light Azore, (1) Bead art. 5601 6mm Crystal, (1) Bead art. 5328 3mm Light Azore, (1) Bead art. 5328 4mm Moonlight, (1) Bead art. 5040 6mm White Opal, (1) Bead art. 5328 4mm Moonlight, (1) Bead art. 5328 4mm Light Azore. Repeat 10 times more. Finish strand by stringing (1) Bead art. 5328 4mm Moonlight, (1) Bead art. 5040 6mm White Opal, (1) Bead art. 5328 4mm Moonlight, (1) Bead art. 5328 3mm Light Azore, (1) Bead art. 5601 6mm Crystal, (1) Bead art. 5328 3mm Light Azore, (1) Bead art. 5328 4mm Moonlight, Bead art. 5030 8mm Crystal, (1) Bead art. 5328 4mm Moonlight, one crimp bead, (9) Bead art. 5328 3mm Light Azore. Add remaining Helix unit, take the wire tail and loop through the crimp bead. Crimp the crimp bead and cover with the crimp cover. (Note: the 9 Swarovski XILION Bead art. 5328 3mm Light Azore create a loop in which the top ring is captured.)



CREATE
YOUR STYLE
with SWAROVSKI ELEMENTS

MINI PROJECT "INNOVATIONS FALL/WINTER 2012/13"

RADIATING HELIX EARRINGS

Materials

SWAROVSKI ELEMENTS

Product Group	Article No.	Amount	Size	Color	Color Code
Beads	5328	22 pcs.	4 mm	Light Azure	361
Filigrees	6020	2 pcs.	18 mm	Crystal	001

Supplies: 2 TerraCast Radiant Round (94-3110-61)
10 TerraCast 2" 24g headpins (01-0029-01)

1 TerraCast ear wire blank (90-1120-00)
2 TerraCast 18g 8mm jump rings (01-0026-01)

Instructions

- STEP 1: Wire wrap each of the Swarovski XILION Beads article 5328 4 mm Light Azure. Split into two piles of 10 pieces.
- STEP 2: Open one jump ring. Attach 5 pieces of wrapped Swarovski XILION Beads article 5328 4 mm Light Azure, one Swarovski Helix Pendant article 6020 18mm, the 5 remaining wrapped Swarovski XILION Beads and one Radiant Round. Close jump ring. Repeat once.
- STEP 3: Place one Swarovski XILION Beads article 5328 4 mm Light Azure onto one ear wire blank. Turn a simple loop. Open the loop and add to the upper hole of the Radiant Round. Repeat once.



CREATE
YOUR STYLE
with SWAROVSKI ELEMENTS

MINI PROJECT “INNOVATIONS FALL/WINTER 2012/13”

PETROL PEARL TOURSADE & EARRINGS

Materials

SWAROVSKI ELEMENTS

EARRING COMPONENTS

Product Group	Article No.	Amount	Size	Color	Color Code
Beads	5000	4 pc.	6 mm	Crystal Bronze Shade	001 BRSH
Beads	5040	2 pcs.	6 mm	Crystal Bronze Shade	001 BRSH
Beads	5328	2 pcs.	4 mm	Crystal Bronze Shade	001 BRSH
Beads	5328	2 pcs.	4 mm	Sand Opal	287
Beads	5328	2 pcs.	5 mm	Crystal Bronze Shade	001 BRSH
Beads	5328	2 pcs.	5 mm	Sand Opal	287
Beads	5328	2 pcs.	6 mm	Crystal Bronze Shade	001 BRSH
Crystal Pearls	5810	2 pcs.	4 mm	Crystal Petrol Pearl	001 600
Crystal Pearls	5810	2 pcs.	5 mm	Crystal Petrol Pearl	001 600
Crystal Pearls	5840	4 pcs.	6 mm	Crystal Petrol Pearl	001 600
Crystal Pearls	5840	4 pcs.	6 mm	Crystal Petrol Pearl	001 600
Crystal Pearls	5840	2 pcs.	10 mm	Crystal Petrol Pearl	001 600

[Continuation on next page](#)

NECKLACE COMPONENTS

Product Group	Article No.	Amount	Size	Color	Color Code
Beads	5000	9 pcs.	8 mm	Crystal Bronze Shade	001 BRSH
Beads	5040	8 pcs.	8 mm	Crystal Bronze Shade	001 BRSH
Beads	5328	4 pcs.	4 mm	Crystal Bronze Shade	001 BRSH
Beads	5328	11 pcs.	5 mm	Sand Opal	287
Beads	5328	14 pcs.	6 mm	Crystal Bronze Shade	001 BRSH
Beads	5523	11 pcs.	12 mm	Crystal Bronze Shade	001 BRSH
Crystal Pearls	5810	110 pcs.	5 mm	Crystal Petrol Pearl	001 600
Crystal Pearls	5810	11 pcs.	6 mm	Crystal Antique Brass Pearl	001 402
Crystal Pearls	5840	86 pcs.	6 mm	Crystal Petrol Pearl	001 600
Crystal Pearls	5840	47 pcs.	10 mm	Crystal Petrol Pearl	001 600
Pendants	6301	18 pcs.	6 mm	Mocca	286

Supplies: 1 TierraCast blank ear wire pair (90-5129-13)
 26 1.5" 24 gauge brass head pins
 8 2x2 crimp beads
 1 TierraCast ¾" Anna's Toggle (94-6160-27)

2" Antique Brass Curb Chain
 8' .014 Beading wire
 8 3mm crimp covers

Instructions for Earrings

- STEP 1: Cut chain at desired length (sample shown uses 0.5"). Needed two equal pieces.
- STEP 2: Using a headpin wire wrap Swarovski Crystal Pearl article 5840 10mm to the bottom of the chain. Repeat once for other earring.
- STEP 3: Beginning from larger to smaller Beads randomly wire wrap Beads from the SWAROVSKI ELEMENTS assortment onto chain link. Four Swarovski Beads per link. Repeat once for other earring.
- STEP 4: Using one Swarovski Crystal Pearl article 5810 4mm Crystal Petrol Pearl add to ear wire blank. Then turn a loop to close off ear wire. Open loop and add to the top link on the chain cluster. Repeat once for other earring.

[Continuation on next page](#)

Instructions for Necklace

- STEP 1: Cut wire into 4 even pieces.
- STEP 2: Using one wire string on three Swarovski Crystal Pearls art. 5810 5mm Crystal Petrol Pearl, then all Crystal Pearls art. 5840 10mm Crystal Petrol Pearl, then three more Swarovski Crystal Pearls art. 5810 5mm Crystal Petrol Pearl. Set aside. Repeat once for Swarovski Crystal Pearls art. 5810 6mm Crystal Petrol Pearl and once for Swarovski Crystal Pearls art. 5810 5mm Crystal Petrol Pearl.
- STEP 3: Using last wire randomly string all SWAROVSKI ELEMENTS.
- STEP 4: Sliding Swarovski Beads to one end of the strand, crimp the exposed wire side to one half of the toggle clasp. Attach the crimp cover. Repeat this step for the remaining three strands.
- STEP 5: Beginning with the first strand added, move the Swarovski Beads back into place so they sit next to the crimp cover that was just added. Crimp the strand to the second half of the toggle clasp. Add the crimp cover. Repeat this step for the remaining three strands. (Note: Crimp each strand in order of how they were crimped onto the first side of clasp so each strands lies next to each other.)

MINI PROJECT "INNOVATIONS FALL/WINTER 2012/13"

VICTORIAN HELIX NECKLACE

Materials

SWAROVSKI ELEMENTS

Product Group	Article No.	Amount	Size	Color	Color Code
Beads	5328	38 pcs.	3 mm	Crystal	001
Crystal Pearls	5810	6 pcs.	4 mm	Crystal White Pearl	001 650
Crystal Pearls	5810	48 pcs.	6 mm	Crystal White Pearl	001 650
Crystal Pearls	5810	21 pcs.	8 mm	Crystal White Pearl	001 650
Pendants	6020	2 pcs.	18 mm	Crystal	001
Pendants	6020	1 pc.	30 mm	Crystal	001

Supplies: 1 TerraCast Vine Hook & Eye clasp (94-6106-12)
2 6mm TerraCast open jump rings (01-0025-01)
2 2x2 crimp beads

24" .014 Beading Wire
1 8mm TerraCast open jump ring (01-0026-01)
2 3mm crimp covers

Instructions

STEP 1: Open one 8mm jump ring and attach one Swarovski Helix Pendant article 6020 30mm, close jump ring. Repeat using two 6mm jump rings and two Swarovski Helix Pendants article 6020 18mm. Set aside.

STEP 2: Using the beading wire, string on (2) Swarovski Crystal Pearls art. 5810 8mm, (1) Swarovski XILION Bead art. 5328 3mm, (1) Crystal Pearl art. 5810 8mm, (1) Bead art. 5328 3mm, (1) Crystal Pearl art. 5810 8mm, (1) Pendant art. 6020 30mm (through jump ring), (1) Crystal Pearl art. 5810 8mm, (1) Bead art. 5328 3mm, (1) Crystal Pearl art. 5810 8mm, (1) Bead art. 5328 3mm, (1) Crystal Pearl art. 5810 8mm. Keeping the SWAROVSKI ELEMENTS in the center of the wire, take one side of the wire and string it backthrough the first Swarovski Crystal Pearl art. 5810 8mm that was added. (Note: each tail should exit the Swarovski Crystal Pearl art. 5810 8mm in opposite directions) You have finished creating your first circle.

[Continuation on next page](#)

Instructions for Victorian Helix Necklace

- STEP 3: Working one side of the wire, add (1) Bead art. 5328 3mm, (1) Crystal Pearl art. 5810 4mm, (1) Bead art. 5328 3mm, (1) Crystal Pearl art. 5810 4mm, (1) Bead art. 5328 3mm, (2) Crystal Pearl art. 5810 8mm, (1) Bead art. 5328 3mm, (1) Crystal Pearl art. 5810 8mm, (1) Bead art. 5328 3mm, (1) Crystal Pearl art. 5810 8mm, (1) Pendant art. 6020 18mm (through jump ring), (1) Crystal Pearl art. 5810 8mm, (1) Bead art. 5328 3mm, (1) Crystal Pearl art. 5810 8mm, (1) Bead art. 5328 3mm, (1) Crystal Pearl art. 5810 8mm. From the side that you are working, take the end of the wire and weave it back through the first Swarovski Crystal Pearl art. 5810 8mm added in this unit. (Note: the wire should be exiting the Crystal Pearl opposite to the two circle units just made)
- STEP 4: Working the opposite side, add (1) Bead art. 5328 3mm, (1) Crystal Pearl art. 5810 4mm, (1) Bead art. 5328 3mm, (1) Crystal Pearl art. 5810 4mm, (1) Bead art. 5328 3mm, (2) Crystal Pearl art. 5810 8mm, (1) Bead art. 5328 3mm, (1) Crystal Pearl art. 5810 8mm, (1) Bead art. 5328 3mm, (1) Crystal Pearl art. 5810 8mm, (1) Pendant art. 6020 18mm (through jump ring), (1) Crystal Pearl art. 5810 8mm, (1) Bead art. 5328 3mm, (1) Crystal Pearl art. 5810 8mm, (1) Bead art. 5328 3mm, (1) Crystal Pearl art. 5810 8mm. From the side that you are working, take the end of the wire and weave it back through the first Swarovski Crystal Pearl art. 5810 8mm added in this unit. (Note: the wire should be exiting the pearl opposite to the three circle units)
- STEP 5: String onto one side (1) Bead art. 5328 3mm, (1) Crystal Pearl art. 5810 4mm, (1) Bead art. 5328 3mm. Repeat pattern on opposite side..
- STEP 6: String (3) Crystal Pearls art. 5810 6mm, (1) Bead art. 5328 3mm, repeat seven times more. Repeat pattern on opposite side.
- STEP 7: Using crimp beads, crimp both sides of the necklace to the Vine hook and eye clasp. Add crimp covers over crimp beads. Trim excess wire.



CREATE
YOUR STYLE
with SWAROVSKI ELEMENTS

MINI PROJECT "INNOVATIONS FALL/WINTER 2012/13"

LARGE PEARL ORCHID CHOKER

Materials

SWAROVSKI ELEMENTS

Product Group	Article No.	Amount	Size	Color	Color Code
Beads	5040	18 pcs.	8 mm	Crystal Silver Night	001 SINI
Crystal Pearls	5810	5 pcs.	4 mm	Crystal Dark Grey Pearl	001 617
Crystal Pearls	5810	1 pc.	5 mm	Crystal Dark Grey Pearl	001 617
Crystal Pearls	5810	16 pcs.	16 mm	Crystal Dark Grey Pearl	001 617
Pendants	6906	1 pc.	40 mm	Crystal Satin	001 SAT

Supplies: 20" 0.014 Beading Wire 3 2x2 crimp beads
2 3mm crimp covers 1 magnetic clasp

Instructions

- STEP 1: Using the 0.014 beading wire add one Crystal Pearl article 5810 5mm from the SWAROVSKI ELEMENTS assortment. While holding both wires together at the ends, string on Swarovski Orchid Pendant article 6906 40mm and (1) Crystal Pearl article 5810 4mm. (Note: both wires are exiting the Swarovski Crystal Pearl article 5810 4mm in the same direction)
- STEP 2: Working one side, string on (2) Swarovski Crystal Pearls article 5810. String (1) Swarovski Briolette Bead article 5040 8mm Crystal Silver Night and (1) Swarovski Crystal Pearl article 5810 16mm Crystal Dark Grey Pearl. Repeat seven times more. Add (1) Swarovski Bead article 5040 8mm Crystal Silver Night.
- STEP 3: Repeat step 2 for the opposite side.
- STEP 4: Crimp the crimp bead on one side of the clasp. Attach the crimp cover to the crimp bead. Repeat for the opposite side. Trim excess wire.



MINI PROJECT "INNOVATIONS FALL/WINTER 2012/13"

DENIM BLUE HEART LINK BRACELET

Materials

SWAROVSKI ELEMENTS

Product Group	Article No.	Amount	Size	Color	Color Code
Beads	5000	10 pcs.	8 mm	Denim Blue	266
Beads	5328	10 pcs.	4 mm	Dark Indigo	288
Pendants	6228	1 pc.	18x17.5 mm	Denim Blue	266

Supplies: 1 TierraCast Lock & Key Toggle (94-6170-12)
1.5 feet 20g wire dead soft

2 8mm TierraCast open jump ring (01-0026-01)

Instructions

- STEP 1: Using 20g wire cut (5) one inch pieces of wire and (5) one and one half inch pieces of wire.
- STEP 2: Using (1) one inch piece of wire, bend wire at a right angle 10mm from the end of the wire. Turn a simple loop. Add on (1) Swarovski Bead art. 5000 8mm Denim Blue. Make a bend at a right angle over the Swarovski Bead and turn a simple loop. Repeat four times more. Set aside.
- STEP 3: Using (1) one and one half inch piece of wire, bend wire at a right angle 10mm from the end of the wire. Turn a simple loop. Add on (1) Swarovski Bead art. 5328 4mm Dark Indigo, (1) Swarovski Bead art. 5000 8mm Denim Blue and (1) Swarovski Bead art. 5328 4mm Dark Indigo. Make a bend at a right angle over the Swarovski Bead art. 5328 4mm Dark Indigo. (Note: be careful not to chip the top of the Swarovski Bead with your tool.) If necessary trim wire to 10mm in length. Turn a simple loop. Repeat four times more.
- STEP 4: Open one side of a step 3 link and attach to the key portion of the toggle clasp.
- STEP 5: Open one side of a step 2 link and attach to the unit created in step 4.
- STEP 6: Open one side of a step 3 link and attach to the unit created in step 5. Repeat, rotating between a step 2 link and a step 3 link, until all the links are chained together.

[Continuation on next page](#)

"Denim Blue Heart Link Bracelet", page 2

STEP 7: Open one size 8 jump ring and attach to Swarovski XILION Heart Pendant art. 6228. Close jump ring.

STEP 8: Open one size 8 jump ring and attach to jump ring from step 7, open end of chain links and heart side of toggle clasp. Close jump ring.



MINI PROJECT “INNOVATIONS FALL/WINTER 2012/13”

GRAPHIC DENIM BLUE PENDANT

Materials

SWAROVSKI ELEMENTS

Product Group	Article No.	Amount	Size	Color	Color Code
Pendants	6128	16 pcs.	12mm	Denim Blue	266
Pendants	6685	1 pc.	28mm	Denim Blue	266

Supplies: 16 6mm TierraCast open jump rings (01-0025-01) 1 hook closure
1 8mm TierraCast open jump ring (01-0026-01) 18” Flat Cable Chain

Instructions

- STEP 1: Add hook closure to one end of chain. (Note: hook used will need to fit into the links of the chain used)
- STEP 2: Open (1) 8mm jump ring and attach Swarovski Graphic Pendant art. 6685 28mm at opposite end of chain. Close jump ring.
- STEP 3: Open all 6mm jump rings. Attach (1) each Swarovski XILION Pear Pendant art. 6128 12mm. Close all jump rings.
- STEP 4: Working with (2) Swarovski XILION Pear Pendants art. 6128 12mm at a time, open the jump rings and add one XILION Pear Pendant on each side of EACH chain link beginning with the chain link attached to Swarovski Graphic Pendant art. 6685 28mm and ending seven links forward.



MINI PROJECT “INNOVATIONS FALL/WINTER 2012/13”

GRAPHIC ART DECO PENDANT

Materials

SWAROVSKI ELEMENTS

Product Group	Article No.	Amount	Size	Color	Color Code
Beads	5328	10 pcs.	5 mm	Jet	280
Beads	5328	15 pcs.	6 mm	Crystal	001
Pendants	6685	1 pc.	38 mm	Jet	280

Supplies: 1 magnetic clasp 2 4mm open jump rings 3 5 mm open jump rings
1 8mm open jump rings 3” small rolo chain 2’ 24 gauge wire
16” 3mm suede lace 2 cord ends

Instructions

- STEP 1: Cut chain in half. Open 5mm jump ring and attach both pieces of chain.
- STEP 2: Cut one piece of wire 1 ¼”. Make a small loop at one end of wire (flatten if desired). String one Swarovski XILION Bead art. 5328 5mm Jet and string into the 6th link on one piece of chain, add one Swarovski XILION Bead art. 5328 6mm Crystal and string into the 6th link on the other piece of chain, add one Bead art. 5328 5mm Jet. Bend the remaining wire over the Bead art. 5328 Jet. Trim to ¼”, turn a loop with remaining wire (flatten if desired).
- STEP 3: Repeat step 2 using one 1 ¾” piece of wire and two Swarovski XILION Beads art. 5328 6mm 5328 Crystal in the center.
- STEP 4: Repeat step 2 using one 2” piece of wire and three Swarovski XILION Beads art. 5328 6mm 5328 Crystal in the center.
- STEP 5: Repeat step 2 using one 2 ¼” piece of wire and four Swarovski XILION Beads art. 5328 6mm 5328 Crystal in the center.
- STEP 6: Repeat step 2 using one 2 ½” piece of wire and five Swarovski XILION Beads art. 5328 6mm 5328 Crystal in the center.

[Continuation on next page](#)

"Graphic Art Deco Pendant", page 2

- STEP 7: Trim chain to one extra link remaining on both sides. Attach one 5 mm jump ring to each remaining chain link.
- STEP 8: Open one 8 mm jump ring and attach to Swarovski Graphic Pendant art. 6685 38 mm Jet and the 5 mm jump ring from step 1.
- STEP 9: Cut suede lace in half. Slide one piece of lace into one 5 mm jump ring from step 7. Fold lace over 1/2". Using a 4" piece of wire do a wire wrap toward the jump ring 4 times. Nip wire tails and tuck next to coil. Repeat for opposite side.
- STEP 10: Attach 4 mm jump ring to one cord end and one half of clasp. Repeat for opposite side.
- STEP 11: Cut suede lace to desired finished length and crimp cord ends onto suede lace.



CREATE
YOUR STYLE
with SWAROVSKI ELEMENTS

MINI PROJECT "INNOVATIONS FALL/WINTER 2012/13"

GRAPHIC ART DECO EARRINGS

Materials

SWAROVSKI ELEMENTS

Product Group	Article No.	Amount	Size	Color	Color Code
Beads	5328	12 pcs.	4 mm	Crystal	001
Beads	5328	2 pcs.	4 mm	Jet	280
Beads	5328	12 pcs.	5 mm	Jet	280
Pendants	6685	2 pcs.	19 mm	Crystal	001

Supplies: 2 4mm open jump rings 2 5mm open jump rings
 1 8mm open jump rings 2 6mm open jump rings
 6" small rolo chain 1 TierraCast pair earwire blanks (90-1120-00)

Instructions

- STEP 1: Cut chain into four 1 ½" pieces. Open one 5mm jump ring and attach to two chain links. Repeat for opposite side and set aside.
- STEP 2: Cut one 1 ¼" piece of wire and make a small loop at one end (flatten if desired). Attach one Swarovski XILION Bead art. 5328 4mm Crystal, slide into the 5th chain link from jump ring. Add one Swarovski XILION Bead art. 5328 5mm Jet and slide into the 5th chain link of second piece. Add one Swarovski XILION Bead art. 5328 4mm Crystal. Bend the remaining wire over the Swarovski Bead. Trim to ¼", turn a loop with remaining wire (flatten if desired).
- STEP 3: Cut one 1 ½" piece of wire and make a small loop at one end (flatten if desired). Attach one Swarovski XILION Bead art. 5328 Crystal, slide into the 4th chain link from the last unit added. Add two Swarovski XILION Beads art. 5328 5mm Jet and slide into the 4th chain link of second piece. Add one Swarovski XILION Bead art. 5328 4mm Crystal. Bend the remaining wire over the Swarovski Bead. Trim to ¼", turn a loop with remaining wire (flatten if desired).

Continuation on next page

"Graphic Art Deco Earrings", page 2

- STEP 4: Cut one 1 $\frac{3}{4}$ " piece of wire and make a small loop at one end (flatten if desired). Attach one Swarovski XILION Bead art. 5328 Crystal, slide into the 4th chain link from the last unit added. Add three Swarovski XILION Bead art. 5328 5 mm Jet and slide into the 4th chain link of second piece. Add one Swarovski XILION Bead art. 5328 4 mm Crystal. Bend the remaining wire over the Swarovski Bead. Trim to $\frac{1}{4}$ ", turn a loop with remaining wire (flatten if desired).
- STEP 5: Open 6 mm jump ring and add one Swarovski Graphic Pendant art. 6685 19 mm Crystal and the 5 mm jump ring from step 1. Close jump ring.
- STEP 6: Open 4 mm jump ring and attach both chain link ends. Close jump rings. (Note: make sure both chain lengths are even.)
- STEP 7: On an earring blank add one Swarovski XILION Bead art. 5328 4 mm Jet, turn a loop. Open that loop and attach to the 4 mm jump ring from step 6.
- STEP 8: Repeat steps 2–7 to make second earring.



MINI PROJECT "INNOVATIONS FALL/WINTER 2012/13"

FLOATING WILD HEART NECKLACE

Materials

SWAROVSKI ELEMENTS

Product Group	Article No.	Amount	Size	Color	Color Code
Round Stones	1122	2 pcs.	12mm	Crystal Copper F	001 COP F
Beads	5743	7 pcs.	12mm	Crystal AB	001 AB
Beads	5743	6 pcs.	12mm	Crystal Golden Shadow	001 GSHA
Beads	5743	7 pcs.	12mm	Crystal Copper	001 COP
Beads	5743	3 pcs.	17mm	Crystal AB	001 AB
Beads	5743	5 pcs.	17mm	Crystal Golden Shadow	001 GSHA
Beads	5743	4 pcs.	17mm	Crystal Copper	001 COP

Supplies: 2 TierraCast 12mm Twisted Round Rivoli Frame (94-2312-27)
2 TierraCast 8mm open jump rings (01-0020-27)
2 TierraCast oval Open jump rings (01-0018-27)
36 inches of chain (picture shows 12 inches each in three styles)

1 TierraCast Bar & Ring (94-6016-27)
2 feet of 24g wire
10 feet 0.5mm black leather
Double epoxy glue

Instructions

- STEP 1: Glue one Swarovski Rivoli Round Stone article 1122 12mm onto the twisted round Rivoli frame. Repeat once. Set aside.
- STEP 2: Cut leather into (5) two foot long pieces. (Note: there may be wastage of leather.) Cut the wire into (6) four inch pieces. Cut the chain into (6) six inch pieces. Set aside.

[Continuation on next page](#)

"Floating Wild Heart Necklace ", page 2

- STEP 3: Beginning in the center of one piece of leather, make an overhand knot. Add (1) Swarovski Wild Heart Bead art. 5743 – your choice of color/size. Make an overhand knot on the opposite side of the Bead. Working on one side of the center Bead, leave a space on the leather about 1.5–2". Make an overhand knot, add (1) Swarovski Wild Heart Bead art. 5743 – your choice of color/size. Make an overhand knot on the opposite side of the Bead. Continue in this manner for both sides of the center Bead and add 4–5 Swarovski Beads total.
- STEP 4: Lay flat the piece made in step 3. Beginning in the center of the second piece of leather, make an overhand knot. Add (1) Swarovski Wild Heart Bead art. 5743 – your choice of color/size. Make an overhand knot on the opposite side of the Bead. Working on one side of the center Bead, leave a space on the leather about 1.5–2". Make an overhand knot, add (1) Swarovski Wild Heart Bead art. 5743 – your choice of color/size. Make an overhand knot on the opposite side of the Bead. Continue in this manner for both sides of the center Bead and add 4–5 Swarovski Beads total. (Note: compare where you knot the Swarovski Wild Heart Bead art. 5743 on the second strand against those of the first strand. This helps to keep the Swarovski Beads in different positions when all the pieces lie next to each other.
- STEP 5: Continue step 4 for the remaining three pieces of leather.
- STEP 6: (Note: before you begin this step, you want to make sure that the glue is set under the Swarovski Round Stones art. 1122 12mm.) Line up two pieces of knotted leather and thread through one of the outside loops of the Rivoli frame. Fold the leather tails back on itself. Using one piece of wire wrap all four strands of leather towards the Rivoli frame, wrapping about 4–6 times, keeping the wire snug. Nip the excess wire and tuck the tails next to the coil made. Repeat for the second Rivoli frame. You may trim the leather tails to your taste.
- STEP 7: Repeat step 6 using only one piece of knotted leather and the center loops of each Rivoli frame.
- STEP 8: Repeat step 6 using the last two strands of knotted leather and the last loop of each Rivoli frame.
- STEP 9: Open one 8mm jump ring and attach to one Rivoli frame and each of the three pieces of chain. Close the jump ring. Repeat for the opposite side.
- STEP 10: Open one oval jump ring and attach to the other end of the three pieces of chain and to one half of the clasp set. Close the jump ring. Repeat for the opposite side.



CREATE YOUR STYLE

with SWAROVSKI ELEMENTS

MINI PROJECT "INNOVATIONS FALL/WINTER 2012/13"

WILD HEART EARRINGS

Materials

SWAROVSKI ELEMENTS

Product Group	Article No.	Amount	Size	Color	Color Code
Beads	5743	6 pcs.	12 mm	Light Siam	227
Beads	5743	2 pcs.	17 mm	Crystal AB	001 AB

Supplies: 1pr TierraCast Earwire (90-1120-11)
2 feet 0.5mm black leather

2 6mm TierraCast open jump rings (01-0025-01)
1 foot 24g wire

Instructions

- STEP 1: Cut leather into 4 pieces 6 inches long. Cut wire into 2 pieces 6 inches long. Attach one open jump ring to each earwire. Close jump ring.
- STEP 2: Take (2) 6 inch pieces of leather and thread through one jump ring. Hold tails even. Take one piece of wire, while holding it over the leather strands begin to wire wrap towards the jump ring about 4–5 times, capturing all four leather strands. (Note: keep wire snug over the leather strands.) Nip off the ends of the wire and gently tuck the wire tails next to the coil made. Repeat for second side.
- STEP 3: On one strand of leather thread (1) Swarovski Wild Heart Bead art. 5743 12 mm Light Siam, (1) Swarovski Wild Heart Bead art. 5743 17 mm Crystal AB and (1) Swarovski Wild Heart Bead art. 5743 12 mm Light Siam. While moving the Swarovski Beads out of the way, make an overhand knot at the end of the leather strand which holds the Beads in place. Repeat for second side.
- STEP 4: On second strand of leather thread (1) Swarovski Wild Heart Bead art. 5743 12 mm Light Siam. While moving the Bead out of the way, make an overhand knot at the end of the leather strand which holds the bead in place. Repeat for the second side.



CREATE
YOUR STYLE
with SWAROVSKI ELEMENTS

MINI PROJECT "INNOVATIONS FALL/WINTER 2012/13"

MULTISTRAND ANTIQUE PINK BRACELET

Materials

SWAROVSKI ELEMENTS

Product Group	Article No.	Amount	Size	Color	Color Code
Beads	5000	16 pcs.	6 mm	Light Grey Opal	383
Beads	5000	30 pcs.	8 mm	Crystal Antique Pink	001 ANTP
Beads	5040	8 pcs.	6 mm	Crystal Silver Shade	001 SSHA
Beads	5328	86 pcs.	4 mm	Crystal Antique Pink	001 ANTP
Beads	5328	8 pcs.	4 mm	Light Grey Opal	383
Beads	5328	8 pcs.	5 mm	Crystal Silver Shade	001 SSHA
Beads	5523	5 pcs.	12 mm	Crystal Silver Shade	001 SSHA
Crystal Pearls	5810	20 pcs.	3 mm	Crystal Platinum Pearl	001 459

Supplies: 50" .014 Beading Wire
10 3mm crimp covers

1 5 Strand Slide Clasp

10 2x2 crimp beads

Instructions

STEP 1: Cut wire into 5 equal pieces.

Continuation on next page

"Multistrand Antique Pink Bracelet ", page 2

- STEP 2: On wire #1 string on one Swarovski Crystal Pearl art. 5810 3mm Crystal Platinum Pearl, one Swarovski Bead art. 5000 8mm Crystal Antique Pink, one Swarovski Bead art. 5040 6mm Crystal Silver Shade, one Bead art. 5000 8mm Crystal Antique Pink, one Crystal Pearl art. 5810 3mm, one Bead art. 5000 8mm Crystal Antique Pink, one Bead art. 5328 4mm Light Grey Opal, one Bead art. 5000 8mm Crystal Antique Pink, one Crystal Pearl art. 5810 3mm, one Bead art. 5000 8mm Crystal Antique Pink, one Bead art. 5040 6mm Crystal Silver Shade, one Bead art. 5000 8mm Crystal Antique Pink, one Crystal Pearl art. 5810, one Bead art. 5000 8mm Crystal Antique Pink, one Bead art. 5328 4mm Light Grey Opal, one Bead art. 5000 8mm Crystal Antique Pink, one Crystal Pearl art. 5810 3mm, one Bead art. 5000 8mm Crystal Antique Pink, one Bead art. 5040 6mm Crystal Silver Shade, one Bead art. 5000 8mm Crystal Antique Pink, one Crystal Pearl art. 5810, one Bead art. 5000 8mm Crystal Antique Pink, one Bead art. 5328 4mm Light Grey Opal, one Bead art. 5000 8mm Crystal Antique Pink, one Crystal Pearl art. 5810, one Bead art. 5000 8mm Crystal Antique Pink, one Bead art. 5040 6mm Crystal Silver Shade, one Bead art. 5000 8mm Crystal Antique Pink, one Crystal Pearl art. 5810. Repeat for wire #5. (Note: Wires #1 & #5 will compliment loop #1 & #5 on the slide clasp.)
- STEP 3: On wire #2 string on seven Swarovski Beads art. 5328 4mm Crystal Antique Pink, one Bead art. 5000 6mm Light Grey Opal, one Bead art. 5328 5mm Crystal Silver Shade, one Bead art. 5000 6mm Light Grey Opal, five Beads art. 5328 4mm Crystal Antique Pink, one Bead art. 5000 6mm Light Grey Opal, one Bead art. 5328 5mm Crystal Silver Shade, one Bead art. 5000 6mm Light Grey Opal, five Beads art. 5328 4mm Crystal Antique Pink, one Bead art. 5000 6mm Light Grey Opal, one Bead art. 5328 5mm Crystal Silver Shade, one Bead art. 5000 6mm Light Grey Opal, seven Beads art. 5328 4mm Crystal Antique Pink. Repeat for wire #4. (Note: Wires #2 & #4 will compliment loop #2 & #4 on the slide clasp.)
- STEP 4: On wire #3 string on two Beads art. 5328 4mm Crystal Antique Pink, one Bead art. 5523 12mm Crystal Silver Shade, three Beads art. 5328 4mm Crystal Antique Pink, one Crystal Pearl art. 5810, three Beads art. 5328 4mm Crystal Antique Pink, one Bead art. 5523 12mm Crystal Silver Shade, three Beads art. 5328 4mm Crystal Antique Pink, one Crystal Pearl art. 5810, three Beads art. 5328 4mm Crystal Antique Pink, one Bead art. 5523 12mm Crystal Silver Shade, three Beads art. 5328 4mm Crystal Antique Pink, one Crystal Pearl art. 5810, three Beads art. 5328 4mm Crystal Antique Pink, one Bead art. 5523 12mm Crystal Silver Shade, three Beads art. 5328 4mm Crystal Antique Pink, one Crystal Pearl art. 5810, three Beads art. 5328 4mm Crystal Antique Pink, one Bead art. 5523 12mm Crystal Silver Shade, two Beads art. 5328 4mm Crystal Antique Pink. (Note: Wire #3 will compliment loop #3 on the slide clasp.)
- STEP 5: Using wire #1 crimp to loop #1 on the clasp. Repeat to corresponding loop on opposite side of clasp.
- STEP 6: Using wire #2 crimp to loop #2 on the clasp. Repeat to corresponding loop on opposite side of clasp.
- STEP 7: Using wire #3 crimp to loop #3 on the clasp. Repeat to corresponding loop on opposite side of clasp.
- STEP 8: Using wire #4 crimp to loop #4 on the clasp. Repeat to corresponding loop on opposite side of clasp.
- STEP 9: Using wire #5 crimp to loop #5 on the clasp. Repeat to corresponding loop on opposite side of clasp.
- STEP 10: Attach one crimp cover over each crimp bead.

MINI PROJECT "INNOVATIONS FALL/WINTER 2012/13"

LOVING THAT ANTIQUE PINK NECKLACE

Materials

SWAROVSKI ELEMENTS

Product Group	Article No.	Amount	Size	Color	Color Code
Beads	5000	14 pcs.	8 mm	Crystal Antique Pink	001 ANTP
Beads	5328	10 pcs.	4 mm	Crystal Antique Pink	001 ANTP
Pendants	6010	14 pcs.	13x6.5 mm	Crystal Antique Pink	001 ANTP
Pendants	6260	1 pc.	37 mm	Crystal Antique Pink	001 ANTP
Pendants	6261	1 pc.	36 mm	Crystal Antique Pink	001 ANTP
Pendants	6262	1 pc.	34 mm	Crystal Antique Pink	001 ANTP
Pendants	6263	1 pc.	36 mm	Crystal Antique Pink	001 ANTP
Pendants	6264	1 pc.	36 mm	Crystal Antique Pink	001 ANTP

Supplies: 1 TerraCast toggle clasp (94-6045-12)
3.5ft 24 gauge wire
6 6mm jump rings
2 3mm crimp covers

1' .014 Beading wire
8' 0.5 leather black
2 2x2 crimp beads

Instructions

STEP 1: Cut 6 pieces of leather at 1' each. Cut 1 piece of leather at 2'. Cut 10 pieces of 24 gauge wire in 4" lengths. Set aside. Close all jump rings.

STEP 2: Using the 2' piece of leather slide leather onto Swarovski "Miss U" Heart Pendant art. 6262. Keeping tails together tie an overhand knot positioned close to the Pendant. Optional: Using one 4" piece of wire perform a wrap from the knot to the Pendant 4 times. Nip wire tails. Tuck tails next to coil. (Note: the wire is used to keep the leather snug against the Pendant.) Set aside..

[Continuation on next page](#)

"Loving That Antique Pink Necklace ", page 2

- STEP 3: Using a 1' piece of leather slide leather onto another Swarovski Heart Pendant. Keeping tails together make an overhand knot close to the Pendant. Slide the leather tails onto a closed jump ring approximately 1" from the knot. Fold the leather tails back on itself. Using one 4" piece of wire perform a wire wrap towards the jump ring approximately 4 times. Nip wire tails and tuck tails next to coil. Repeat for the 3 remaining Heart Pendants from the SWAROVSKI ELEMENTS assortment. Set aside.
- STEP 4: Using the unit made in step 2, on one side of the leather slide the leather through the jump ring of Swarovski "Truly in Love" Heart Pendant art. 6264. Knot in place 2" above Swarovski "Miss U" Heart Pendant art. 6262.
- STEP 5: On the same side slide the leather through the jump ring of Swarovski "Crazy 4 U" Heart Pendant art. 6260. Knot in place 3" above the Swarovski "Truly in Love" Heart Pendant art. 6264.
- STEP 6: Working the opposite side of the leather slide the leather through the jump ring of Swarovski "Forever 1" Heart Pendant art. 6263. Knot in place 4" above the Swarovski "Miss U" Heart Pendant art. 6262.
- STEP 7: On the same side slide the leather through the jump ring of Swarovski "Devoted 2 U" Heart Pendant art. 6261. Knot in place 3" above the Swarovski "Forever 1" Heart Pendant art. 6263.
- STEP 8: Holding the main leather tails together fold the leather back on itself ½" from the last tied on Swarovski Heart Pendant. Take one piece of 4" wire and perform a wire wrap from the strand of Pendant to the ¼" from the end of the loop 6 times. Nip excess wire and tuck tails into coils. Set aside.
- STEP 9: Using the 0.014 beading wire string on one crimp bead and five Swarovski XILION Beads art. 5328 4mm Crystal Antique Pink 2" from the end of the wire. Take the short tail and loop back through the crimp bead. Crimp the crimp bead. Attach crimp cover. String on one Swarovski Round Bead art. 5000 8mm Crystal Antique Pink and one Swarovski Pendant art. 6010 Crystal Antique Pink. Repeat pattern 6 more times. String on the main heart unit through the leather loop at the top (unit made in step 8). String on one Swarovski Pendant art. 6010 Crystal Antique Pink and one Round Bead art. 5000 8mm Crystal Antique Pink. Repeat pattern 6 more times. String one crimp bead, five Swarovski XILION Beads art. 5328 4mm Crystal Antique Pink, and thread wire tail back through crimp bead. Crimp the crimp bead. Attach the crimp cover.
- STEP 10: Attach a jump ring to each side of the toggle clasp.
- STEP 11: Using one piece of leather slide leather through one crystal loop, keeping tails together use one 4" piece of wire and wrap towards the crystal loop four times. Nip wire tails and tuck next to coil. Slide the opposite side of leather through the jump ring on one half of the toggle. Fold leather back on itself to achieve desired length. Take one 4" piece of wire and perform a wrap towards the jump ring 4 times. Nip wire tails and tuck into coil.
- STEP 12: Use remaining piece of leather and repeat step 11 for the opposite side.
- STEP 13: Trim all leather tails to taste.