

CREATE
YOUR STYLE
with SWAROVSKI ELEMENTS



CREATE YOUR STYLE
MINI PROJECTS

SUMMER FUN WITH FILIGREES



CREATE YOUR STYLE

with SWAROVSKI ELEMENTS



MINI PROJECT SUMMER FUN WITH FILIGREES

LOUISE NECKLACE

Materials

SWAROVSKI ELEMENTS

Product Group	Article No.	Amount	Size	Color	Color Code
Beads	5040	2 pcs.	6 mm	Aquamarine	202
Beads	5328	96 pcs.	4 mm	Aquamarine	202
Beads	5328	34 pcs.	3 mm	Crystal	001
Pendants	6010	1 pc.	13x6.5 mm	Aquamarine	202
Filigrees	62000	1 pc.		Crystal/Aquamarine	001/202
Filigrees	62003	1 pc.		Aquamarine	202
Filigrees	62026	1 pc.		Crystal/Aquamarine/Indicolite/ Crystal Silver Shade	001/202/379/ 001 SSHA

Supplies: 2x2 Silver Crimp Beads, 4 pcs. 3 mm Silver Crimp Covers, 4 pcs. 24" Fine Beading Wire
6 mm Silver Jump Ring, 1 pc. 2" 20 Gauge Silver Wire 1 Tierra Cast Toggle Clasp (94-6151-12)

Instructions

- STEP 1: Cut beading wire into 2 equal pieces.
- STEP 2: String one wire end through a crimp bead then through one half of the TierraCast toggle clasp and back through the crimp bead. Crimp the crimp bead to secure wire. Cut any remaining wire. Cover the crimp bead with the crimp cover.
- STEP 3: String on one Bead art. 5328 3 mm Crystal and three Beads art. 5328 4 mm Aquamarine from the SWAROVSKI ELEMENTS assortment. Repeat pattern 15 times and end with one more Swarovski Bead art. 5328 3 mm Crystal.
- STEP 4: Repeat step 2 using one of the "petals in the Swarovski Filigree art. 62026 in place of the clasp.

[Continuation on next page](#)

"Louise Necklace", page 2

- STEP 5: Repeat steps 2 – 4 for other side of necklace. Use the other half of the TierraCast toggle clasp for one end and the "second" petal over on the filigree. Leave one petal open between the two sides of the necklace.
- STEP 6: Cut the 20 gauge wire in half and use one half to create a beaded eye pin using the Swarovski Bead art. 5040 6mm Aquamarine. (Make a small loop on both sides of the Bead.) Repeat for other Bead art. 5040 6mm Aquamarine.
- STEP 7: Attach one beaded eye pin to the bottom petal of the Filigree attached to the beaded necklace (art. 62026). Attach the other end of this beaded eye pin to one opening in the Filigree art. 62003 from the SWAROVSKI ELEMENTS assortment.
- STEP 8: Attach the second beaded eye pin to the bottom of art. 62003 and attach the bottom of this beaded eye pin to the top of the Swarovski Filigree art. 62000.
- STEP 9: Open the 6mm jump ring and attach the Pendant art. 6010 from the SWAROVSKI ELEMENTS assortment. Attach this to the bottom of the last Filigree and close the jump ring to secure.



CREATE
YOUR STYLE
with SWAROVSKI ELEMENTS

MINI PROJECT SUMMER FUN WITH FILIGREES CHAINED PINWHEEL EARRINGS

Materials

SWAROVSKI ELEMENTS

Product Group	Article No.	Amount	Size	Color	Color Code
Beads	5328	20 pcs.	4 mm	Montana	207
Beads	5328	2 pcs.	4 mm	Turquoise	267
Beads	5328	10 pcs.	5 mm	Turquoise	267
Filigrees	62022	4 pcs.		Montana/Turquoise	207/267

Supplies: 2 TierraCast Sterling Silver Blank Ear wires (90-1120-00) 4 mm Silver Jump Rings (6)
24" 24 Gauge wire 6" Small Rolo Chain
Two part Epoxy

Instructions

- STEP 1: Using two party epoxy glue, glue the flat side of two Swarovski Filigrees, art. 62022 together. Repeat with the other two Filigrees from the SWAROVSKI ELEMENTS assortment. Set aside while letting glue set according to manufacturer's instructions.
- STEP 2: Cut Small Rolo Chain in 4 equal pieces, approximately 1 ½" each. Open a jump ring and attach two pieces of chain and close the jump ring. Repeat step for other earring.
- STEP 3: Open two more jump rings. Attach one to the bottom of one piece of chain and to one of the "round" petals in the glued Filigree from step 1. Close the jump ring to secure. Repeat for other side of earring.
- STEP 4: Cut the 24 gauge wire into ten equal pieces, approximately 1 1/8" each. Turn a small loop on the bottom of each one. Add one Bead art. 5328 4mm Montana from the SWAROVSKI ELEMENTS assortment to each wire.
- STEP 5: Slide the open end of the beaded wire through the fifth or sixth link in the first row of chain. Add one Swarovski Bead art. 5328 5mm Turquoise and slide the free end of the wire through the corresponding link in the second row of chain. Add another Swarovski Bead 4mm Montana and turn another small loop to secure Beads.
- STEP 6: Repeat step 5 four more times always leaving 5 or 6 chain links between the beaded wires.

[Continuation on next page](#)

"Chained Pinwheel Earrings", page 2

STEP 7: Slide on one Bead art. 5328 4 mm Turquoise from the SWAROVSKI ELEMENTS assortment onto one of the TierraCast Blank ear wires. Turn a loop at the bottom of the ear wire. Open the loop and attach to the 4 mm jump ring at the top of the earring.

STEP 8: Repeat steps 2 – 7 to complete the earring pair.

CREATE YOUR STYLE

with SWAROVSKI ELEMENTS



MINI PROJECT SUMMER FUN WITH FILIGREES

DIANA EARRINGS

Materials

SWAROVSKI ELEMENTS

Product Group	Article No.	Amount	Size	Color	Color Code
Beads	5328	2 pcs.	4 mm	Dark Indigo	288
Beads	5328	12 pcs.	4 mm	Jet	280
Pendants	6010	4 pcs.	11x5.5 mm	Dark Indigo	288
Pendants	6010	2 pcs.	13x6.5 mm	Dark Indigo	288
Pendants	6301	24 pcs.	6 mm	Dark Indigo	288
Filigrees	62005	2 pcs.		Dark Indigo/Jet	288/280

Supplies: 2 TierraCast Sterling Silver Blank Ear wires (90-1120-00) 4 mm Silver Jump Rings (6)
2x2 Silver Crimp Beads 6 pcs. 2 3 mm Silver Crimp Covers, 6 pcs.
4' Fine Beading Wire

Instructions

- STEP 1: Open 3 jump rings. Attach one to each of the bottom three Swarovski Filigree petals and close jumps to secure.
- STEP 2: Cut beading wire into six 8" pieces. String one Swarovski Pendant art. 6010 13x6.5mm and center on wire. Gently fold wire in half. String the following Beads and Pendants from the SWAROVSKI ELEMENTS assortment onto both strands of wire: one Bead art. 5328 4mm Jet, five Pendants art. 6301 6mm Dark Indigo (making sure they face in alternating directions) and one Bead art. 5328 4mm Jet.
- STEP 3: String both wires through one of the crimp beads, then through the middle jump ring that was attached to the Filigree in step 1 and back through the crimp bead and crimp to secure. Trim excess wire and attach crimp cover.

[Continuation on next page](#)

"Diana Earrings", page 2

- STEP 4: Repeat step 2 using one Swarovski Pendant art. 6010 11x5.5mm and only 3 Pendants art. 6301. Attach to one of the jump rings on either side of center. Repeat this step for the remaining jump ring.
- STEP 5: String one Bead art. 5328 4mm Dark Indigo from the SWAROVSKI ELEMENTS assortment onto one of the TierraCast Blank Ear Wires. Turn a half loop on the end of the ear wire and attach it to one of the "top" openings of one of the petals on the Filigree. Completely close the loop on the ear wire to secure.
- STEP 6: Repeat steps 1 – 5 to complete the earring pair.

CREATE YOUR STYLE

with SWAROVSKI ELEMENTS



MINI PROJECT SUMMER FUN WITH FILIGREES

KIRSTIN EARRINGS

Materials

SWAROVSKI ELEMENTS

Product Group	Article No.	Amount	Size	Color	Color Code
Beads	5040	2 pcs.	6 mm	Caribbean Blue Opal	394
Beads	5328	2 pcs.	4 mm	Air Blue Opal	285
Beads	5328	2 pcs.	5 mm	Air Blue Opal	285
Beads	5601	2 pcs.	8 mm	Pacific Opal	390
Filigrees	62024	2 pcs.		Pacific Opal/Air Blue Opal/ Caribbean Blue Opal	390/285/ 394

Supplies: 2 TierraCast Sterling Silver Blank Ear wires (90-1120-00) 4 mm Silver Jump Rings (4)
3" 20 Gauge wire 6" Small Rolo Chain

Instructions

- STEP 1: Slide on one Bead art. 5328 4 mm Air Blue Opal from the SWAROVSKI ELEMENTS assortment onto one of the TierraCast Blank ear wires. Turn a loop at the bottom of the ear wire and attach it to one of the corners of the Swarovski Filigree. Close the jump ring to secure and repeat for other ear wire.
- STEP 2: Cut the 20 gauge wire in half. Turn a small loop at the bottom of one piece of wire and add one Swarovski Bead art. 5040 5 mm Air Blue Opal, then add one Bead art. 5040 6 mm Caribbean Blue Opal and one Swarovski Bead art. 5601 Pacific Opal.
- STEP 3: Turn a loop on the end of the wire and attach to the opposite point of the Filigree. Close loop to secure and repeat entire step for other earring.
- STEP 4: Cut the chain in half and open the four jump rings.
- STEP 5: Attach the chain to both of the corners of the Swarovski Filigree using the open the jump rings. Close the jump rings to secure. Repeat for other earring.



MINI PROJECT SUMMER FUN WITH FILIGREES

SANYOGITA EARRINGS

Materials

SWAROVSKI ELEMENTS

Product Group	Article No.	Amount	Size	Color	Color Code
Beads	5328	54 pcs.	3 mm	Topaz	203
Beads	5328	8 pcs.	4 mm	Smoked Topaz	220
Filigrees	62026	2 pcs.		Smoked Topaz/Topaz/Sand Opal/ Light Smoked Topaz	220/203/287/ 221

Supplies: 2 TierraCast Sterling Silver Blank Ear wires (90-1120-00) 1x1 crimp beads (12)
2' Very Fine Beading Wire

Instructions

- STEP 1: Slide on one Bead art. 5328 4 mm Smoked Topaz from the SWAROVSKI ELEMENTS assortment onto one of the TierraCast Blank ear wires. Turn a loop at the bottom of the ear wire and attach it to one of the petals of the Swarovski Filigree. Close the loop to secure and repeat for other ear wire.
- STEP 2: Cut the beading wire as follows: two 5" pieces, two 4" pieces and two 3" pieces.
- STEP 3: Using one of the 3" pieces, string the wire through one of the crimp beads. String the wire through the open petal on the bottom right of the Swarovski Filigree. String the wire back through the crimp bead, crimp to secure and cut off excess wire.
- STEP 4: String on 6 Swarovski Beads art. 5328 3mm Topaz, one Swarovski Bead art. 4 mm Smoked Topaz and 6 more Swarovski Beads art. 5328 Topaz. Attach free end of wire to the open petal on the bottom left of the Filigree as was done in step 3.
- STEP 5: Using the 4" piece of wire repeat step 4, but use nine Swarovski Beads art. 5328 3mm Topaz.
- STEP 6: Using the 5" piece of wire repeat step 4 again, this time using twelve Swarovski Beads art. 5328 3mm Topaz.
- STEP 7: Repeat steps 3-6 for second earring.

CREATE YOUR STYLE

with SWAROVSKI ELEMENTS

MINI PROJECT SUMMER FUN WITH FILIGREES

ELIZABETH COLLAR

Materials

SWAROVSKI ELEMENTS

Product Group	Article No.	Amount	Size	Color	Color Code
Beads	5328	13 pcs.	8mm	Mocca	286
Filigrees	62011	4 pcs.		Mocca/Crystal Golden Shadow/ Smoked Topaz	286/001 GSHA/ 220

Supplies: 9 TierraCast 1 ¼" Gold Radiant Rings (94-3112-25) 1 Gold Hook
3' 24 Gauge Gold Wire

Optional – additional supplies for linked necklace (not pictured)
6mm gold jump rings (26)

Instructions

STEP 1: Cut wire into 13 equal pieces

STEP 2: Take one piece of precut wire and wire wrap a loop to one radiant ring. Add one Bead art. 5328 8mm Mocca from the SWAROVSKI ELEMENTS assortment to the other end of the wire. Wire wrap a loop to one Swarovski Filigree art. 62011.

STEP 3: Take one piece of precut wire and wire wrap a loop to the opposite side of Filigree art. 62011. Add on one Swarovski Bead art. 5328 8mm Mocca to the other end of the wire and proceed to wire wrap a loop to a second Filigree art. 62011. Repeat this step until you have three Filigree components attached to each other.

STEP 4: Add on one Swarovski Bead art. 5328 8mm Mocca to the open end of the wire (off Filigree #3). Wire wrap a loop to one radiant ring. Take one piece of precut wire and wire wrap a loop to the opposite side of the radiant ring. Add on one Swarovski Bead art. 5328 8mm Mocca to the open end of the wire and wire wrap a loop to a second radiant ring.

STEP 5: Working off the first radiant ring from step 2, take one precut wire and wire wrap a loop to the opposite side of the same ring. Add on one Swarovski Bead art. 5328 8mm Mocca to the open wire and proceed to wire wrap a loop to a new radiant ring. Proceed in this manner five more times.

[Continuation on next page](#)

WWW.CREATE-YOUR-STYLE.COM

"Elizabeth Collar", page 2

- STEP 6: Take one piece of precut wire and wire wrap a loop to the last Filigree art. 62011. Add on one Swarovski Bead art. 5328 8mm Mocca to the open end of the wire. Wire wrap a loop to the bottom of the radiant ring from step 2. Note: this Filigree is the drop bead off the center radiant ring.
- STEP 7: You may attach the hook closure by performing a wire wrap using the last Swarovski Bead art. 5328 8mm Mocca. Note: The hook may be attached to either radiant ring dependent on being right or left handed.
- OPTIONAL: This piece is intended to be worn as a collar. If you feel that your wrapped loops to the radiant rings have too much movement, you may use your chain nose pliers to "tweek" the loop 90 degrees. This technique will tighten the loop against the ring. You may do this from the front and back side of the each loop.

Instructions to make a linked Necklace (not pictured)

- STEP 1: Cut wire into 13 equal pieces and thread one piece of wire through each of the 13 Beads art. 5328 8mm Mocca from the SWAROVSKI ELEMENTS assortment. Set aside.
- STEP 2: Center the Bead on the wire and wrap the end of the wire through a closed jump ring and back around the top of the wire several times. Cut excess wire. (Note: Do not wrap the wire near the part of the jump ring that opens as you will need to open them to assemble the necklace.) Repeat for other side of wire and for all remaining Beads.
- STEP 3: Open one of the beaded jump rings and attach it to the gold hook. Connect the other end of the beaded jump ring to one of the TierraCast Gold Radiant Rings. Attach another beaded jump ring to the other end of this Radiant Ring.
- STEP 4: Connect two more Swarovski Filigrees using two more beaded jump rings in the same manner.
- STEP 5: Add another beaded jump ring to the end of the last filigree added in step 4. Connect a Radiant Ring to the bottom jump ring on this Bead and connect 6 more Radiant Rings in the same manner.
- STEP 6: Attach the last beaded jump ring to the Radiant Ring that was added after the last Filigree in step 4 (this is the bottom of the necklace). Attach the last Swarovski Filigree to the bottom jump ring of this Bead.



MINI PROJECT SUMMER FUN WITH FILIGREES
**DUE FIORE LARIAT
NECKLACE**

Materials

SWAROVSKI ELEMENTS

Product Group	Article No.	Amount	Size	Color	Color Code
Beads	5328	1 pc.	8 mm	Mocca	286
Beads	5328	3 pcs.	5 mm	Sand Opal	287
Filigrees	62021	2 pcs.		Sand Opal/Mocca	287/286

Supplies: 1 TierraCast Radiant Ring (94-3112-61)
4' 1 mm Leather cord
8mm 18 Gauge Jump Ring (1)

1 TierraCast Large Quatrefoil Link (94-3141-61)
6" 20 Gauge Wire
1' 24 Gauge Wire

Instructions

- STEP 1: Fold leather cord almost in half, leaving one side about 1 ½" longer than the other side.
- STEP 2: Loop the closed end of the leather cord through the TierraCast Radiant Ring and drop the two ends through the loop that is created in the leather cord to secure the cord onto the Ring.
- STEP 3: Cut the 24 gauge wire into three equal pieces. Connect the long cord end to the short cord end by wrapping one piece of wire around both cords about 1 ½" above the short end of the cord. Wrap wire around cords several times to secure. Gently flatten wire slightly using flat nose pliers.
- STEP 4: Loop the long end of the leather cord through one of the open petals of the Filigree from the SWAROVSKI ELEMENTS assortment. Loop it back around and up the side of the cord about ¼". Secure the cord end to the other side of the cord by wrapping another piece of 24 gauge wire around both several times. Again, gently flatten wire slightly using flat nose pliers.
- STEP 5: Loop the short end of the leather cord through the TierraCast Large Quatrefoil Link and secure the cord as done in step 4.
- STEP 6: Cut three 1.5" pieces of 20 gauge wire. Make a loop at the bottom of all three wires and add one Swarovski Bead art. 5328 5mm Sand Opal to each. Turn a loop at the top of each wire.

[Continuation on next page](#)

"Due Fiore Lariat Necklace", page 2

- STEP 7: Turn a loop at the bottom of the remaining piece of wire. Add the Swarovski Bead art. 5328 8mm Mocca and turn a loop at the top of the Bead.
- STEP 8: Attach one 5mm Sand Opal beaded wire to one of the loops in the 8mm Bead. Attach the loop at the top of the 8mm Bead to the bottom of the Quatrefoil Link. Attach one 5mm Sand Opal beaded wire to both sides of the Mocca Bead on the Quatrefoil Link. Make sure all loops are closed securely.
- STEP 9: Open the 8mm jump ring and attach it to one of the open petals on the other Swarovski Filigree. Attach the jump ring to the Radiant Ring and close to secure.



MINI PROJECT SUMMER FUN WITH FILIGREES
MAEBH
BRACELET

Materials

SWAROVSKI ELEMENTS

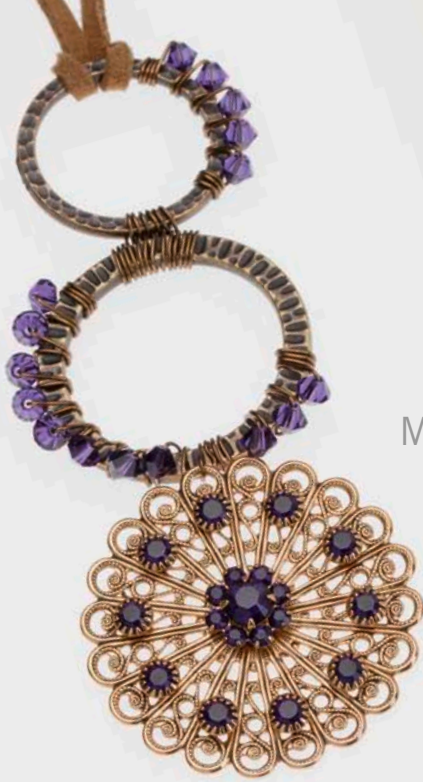
Product Group	Article No.	Amount	Size	Color	Color Code
Beads	5601/B	2 pcs.	8 mm	Marbled Yellow	652
Filigrees	62023	3 pcs.		Olivine/Jonquil	228/213

Supplies: 1 TierraCast Toggle Clasp (94-6045-12)
4 mm Jump Rings (6)
Lt. Green Suede Lace (12")
20 Gauge Wire (3")

6 mm Jump Rings (2)
Cord Crimp Ends (2)
24 Gauge Wire (6")

Instructions

- STEP 1: Cut Light Green Suede Lace in half. Fold each piece in half and attach the cord crimp ends to the open ends of each folded piece.
- STEP 2: Open the two 6" jump rings and attach one to each folded end of suede lace and close the jump rings.
- STEP 3: Cut the 24 gauge wire in half. Wrap one piece around the suede lace bout ¼" from the jump ring to hold the suede lace together.
- STEP 4: Cut the 20 gauge wire in half. Turn a loop on one end, but do not close the loop completely. String on one Bead art. 5601/B 8 mm Marbled Yellow from the SWAROVSKI ELEMENTS assortment. Turn a loop on the other end and repeat for second cube. Again, do not close the loops completely.
- STEP 5: Open the 4 mm jump rings. Attach two of them to the 6 mm jump ring attached to the suede lace in step 2 and to one of the open petals on one of the Swarovski Filigrees art. 62023. Close jump rings to secure. Repeat for other side of bracelet. These are the two ends of the bracelet.
- STEP 6: Attach one of the beaded loops made in step 4 to the remaining Swarovski Filigree. Attach the other beaded loop to the other side of this Filigree. This will be the middle of the bracelet.
- STEP 7: Connect the middle piece of the bracelet made in step 6 to the two open ends of the Filigrees made in step 5.
- STEP 8: Use the two remaining open 4 mm jump rings to connect the toggle clasp to the cord crimp ends.



MINI PROJECT SUMMER FUN WITH FILIGREES

ROYAL RHAPSODY NECKLACE

Materials

SWAROVSKI ELEMENTS

Product Group	Article No.	Amount	Size	Color	Color Code
Beads	5328	16 pcs.	4 mm	Purple Velvet	277
Filigrees	62010	1 pc.		Purple Velvet	277

Supplies: 1 TierraCast 1 ¼" Radiant Ring (94-3112-27)
Magnetic Clasp set (1)
2' 3 mm Lt. Brown Suede Lace
6mm Brass Jump Rings, 2 pcs.

1 TierraCast 1" Hammertone Ring (94-3095-27)
2 Brass Crimp Cord Ends
4' 24 Gauge Bronze Wire

Instructions

- STEP 1: Fold suede lace in half and wrap bottom loop around the TierraCast 1" Hammertone Ring, bringing the two loose ends through the loop attaching it to the ring.
- STEP 2: Wrap 24 gauge bronze wire around the right side of the ring 3 times, starting next to the suede lace. Add one Bead art. 5328 4mm Purple Velvet from the SWAROVSKI ELEMENTS assortment. Wrap beaded wire around ring and wrap plain wire around one more time. Add another Swarovski Bead art. 5328 to brass wire and repeat wrapping beaded wire and plain covering just a third of it until you have 5 Beads attached to the ring. Wrap plain wire around ring 3 more times and cut off remaining wire.
- STEP 3: Attach the beaded Hammertone Ring to the TierraCast 1 ¼" Radiant Ring: Start by wrapping the brass wire around the 1 ¼" Radiant Ring 3 times. Add the 1" Hammertone Ring and continue wrapping the two rings together. Wrap the brass wire around the two rings 7 times then continue to wrap the other side of just the 1 ¼" Radiant Ring 3 more times. Cut off remaining wire.
- STEP 4: Attach the Swarovski Filigree art. 62010 to the bottom of the 1 ¼" Radiant Ring by wrapping the brass wire through one of the loops in the Filigree and the Radiant Ring 3 or 4 times.

[Continuation on next page](#)

"Royal Rhapsody Necklace", page 2

- STEP 5: Starting on the left side of the 1" ring, about ¼" down from the plain brass wire at the top of the 1 ¼" ring, wrap the brass wire around the ring 3 times. Add one Swarovski Bead art. 5328 Purple Velvet and wrap around ring as done in step 2. Continue to wrap beaded wire and plain wire around this ring until all the Swarovski Beads have been added. End by wrapping the brass wire around the ring three times and cut off remaining wire. (You will have to "jump over" the brass wire that is connecting the filigree to the ring.)
- STEP 6: Attach one crimp cord end to each side of the suede lace.
- STEP 7: Open one 6mm jump ring and attach one crimp cord end and one half of the magnetic clasp to the jump ring, then close. Repeat for the other side.



CREATE
YOUR STYLE
with SWAROVSKI ELEMENTS

MINI PROJECT SUMMER FUN WITH FILIGREES

GLINDA BRACELET

Materials

SWAROVSKI ELEMENTS

Product Group	Article No.	Amount	Size	Color	Color Code
Beads	5328	20 pcs.	4 mm	Rose AB	209 AB
Beads	5328	36 pcs.	4 mm	Violet	371
Beads	5328	12 pcs.	6 mm	Light Rose	223
Beads	5328	3 pcs.	8 mm	Fuchsia	502
Filigrees	62025	4 pcs.		Light Rose/Fuchsia/Violet	223/502/371

Supplies: 2 TierraCast Garland Links (94-3040-12)
6mm Silver Jump Rings (2)
36" Fine Beading Wire

1 TierraCast Classic Toggle (94-6045-12)
2x2 Silver Crimp Beads (2)

Instructions

- STEP 1: Cut the wire into three equal pieces. Attach one piece of wire to the top loop in the TierraCast Garland Link by stringing the wire through a crimp bead, through the loop in the Garland Link and back through the crimp bead. Crimp the bead to secure wire.
- STEP 2: String on three Beads art. 5328 4 mm Violet from the SWAROVSKI ELEMENTS assortment. Weave the wire through the outside open loops in one of the Swarovski Filigrees.
- STEP 3: Add the following Swarovski Beads art. 5328: one 4 mm Violet, one 6 mm Light Rose, two 4 mm Violet, one 6 mm Light Rose and one 4 mm Violet. Weave the wire through another Swarovski Filigree in the same way. Repeat the Bead and Filigree pattern in this step two more times. Add three more Beads art. 5328 4 mm Violet. Attach end of wire to the coordinating loop on the other Garland Link.

[Continuation on next page](#)

"Glinda Bracelet", page 2

- STEP 4: Attach the middle wire to the middle loop in the link as done in step 1. Add four Swarovski Beads art. 5328 4 mm Rose AB and weave the wire through the middle of the Filigree attached in step 2. Add the following Swarovski Beads art. 5328: two 4 mm Rose AB, one 8 mm Fuchsia and two more 4 mm Rose AB. Repeat three more times and end with four Beads art. 5328 4 mm Rose AB from the SWAROVSKI ELEMENTS assortment. Attach this middle wire to the middle loop in the link as previously done.
- STEP 5: Repeat step 2 and 3 for the third strand.
- STEP 6: Open the two 6 mm jump rings. Attach each one to the loop in the ends of the Garland link and to one end each of the TierraCast Classic Toggle clasp.

MINI PROJECT SUMMER FUN WITH FILIGREES

FLEUR NOIR LARIAT NECKLACE



Materials

SWAROVSKI ELEMENTS

Product Group	Article No.	Amount	Size	Color	Color Code
Beads	5900	1 pc.	14 mm	Crystal Silver Shade	001 SSHA
Beads	5900	3 pcs.	14 mm	Jet	280
Filigrees	62011	1 pc.		Jet/Black Diamond/Crystal	280/215/001

Supplies: 3' 3mm Red Flat Suede Lace

6" 24 Gauge Silver Wire

Instructions

- STEP 1: Fold suede lace in half. String on one Bead art. 5900 14mm Jet from the SWAROVSKI ELEMENTS assortment through both loose ends of the suede lace. Pull one end down so it is about 4-5 inches longer than the other end.
- STEP 2: On the long end of the suede lace add one Swarovski Bead art. 5900 14mm Jet, one Bead art. 5900 14mm Crystal Silver Shade and then the last Beads art. 5900 14mm Jet. Tie a simple knot at the bottom of the suede lace.
- STEP 3: Cut the silver wire in two pieces. Push the top Bead in Jet and in Crystal Silver Shade up a few inches. Wrap one piece around the suede lace at the top of the last Bead in Jet. Push the Swarovski Beads in Crystal Silver Shade and Jet back down to touch the wrapped wire.
- STEP4: Attach the Swarovski Filigree art. 62011 to the other end of the suede lace. String the lace through one of the center openings of one of the petals of the Filigree. Loop the lace back up and wrap the other piece of wire around both pieces of lace to secure.